

6.2 LAYOUT DESIGN

Basement, Ground and First Floors

The ground and first floor levels will comprise office (B1), café (A3), self-storage reception (B8), and communal residential (C3) floorspace. The basement levels will generally comprise of self-storage facilities (B8), with an area of office (B1) at the first level of basement that has ample rooflights to above.

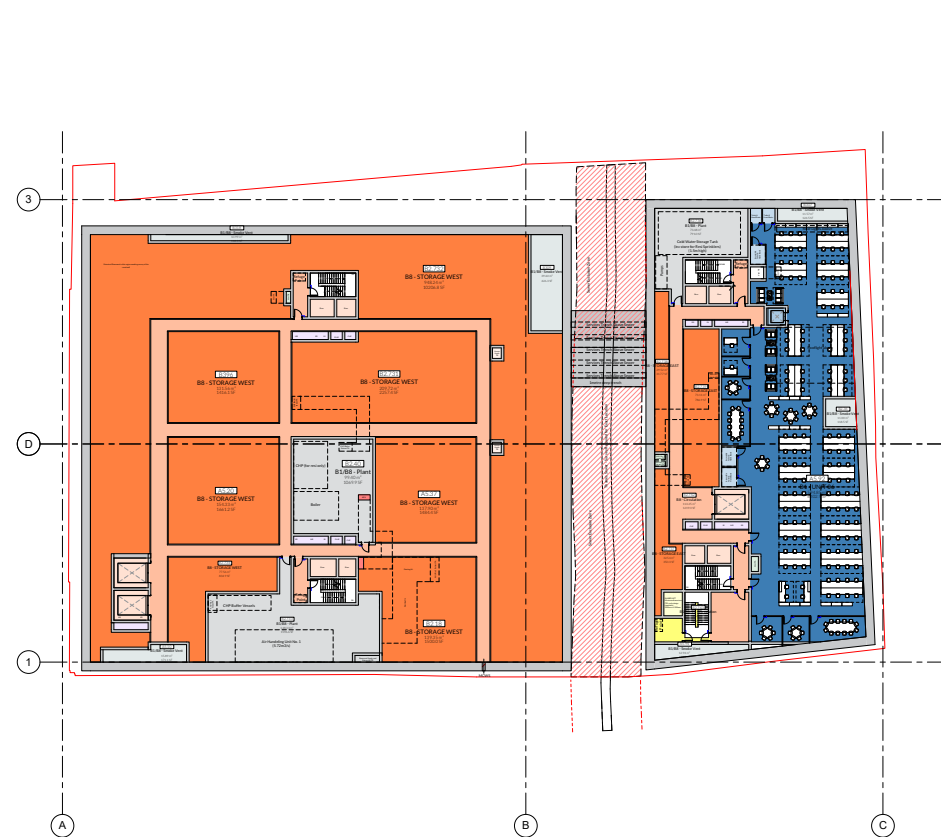
Residential cores will be accessed from ground floor level via secure entry doors.

Overall the commercial floorspace will deliver a significant increase in the net area compared to the existing building and will result in a significant qualitative enhancement to the commercial floorspace offer.

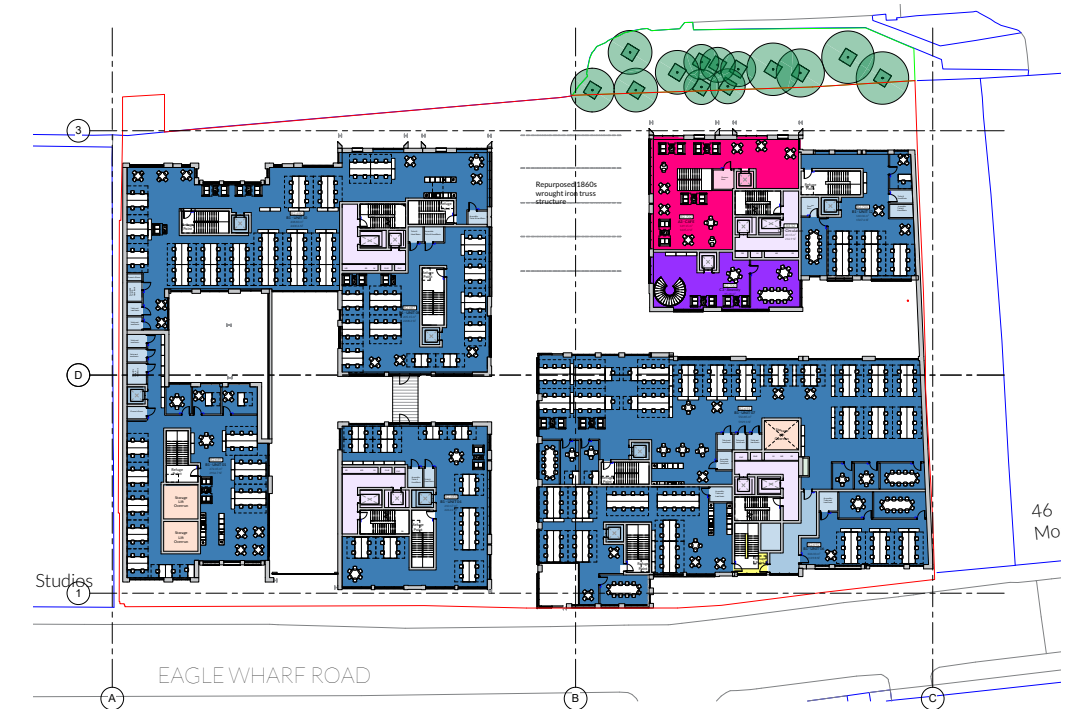
Basement Level -02



Basement Level -01

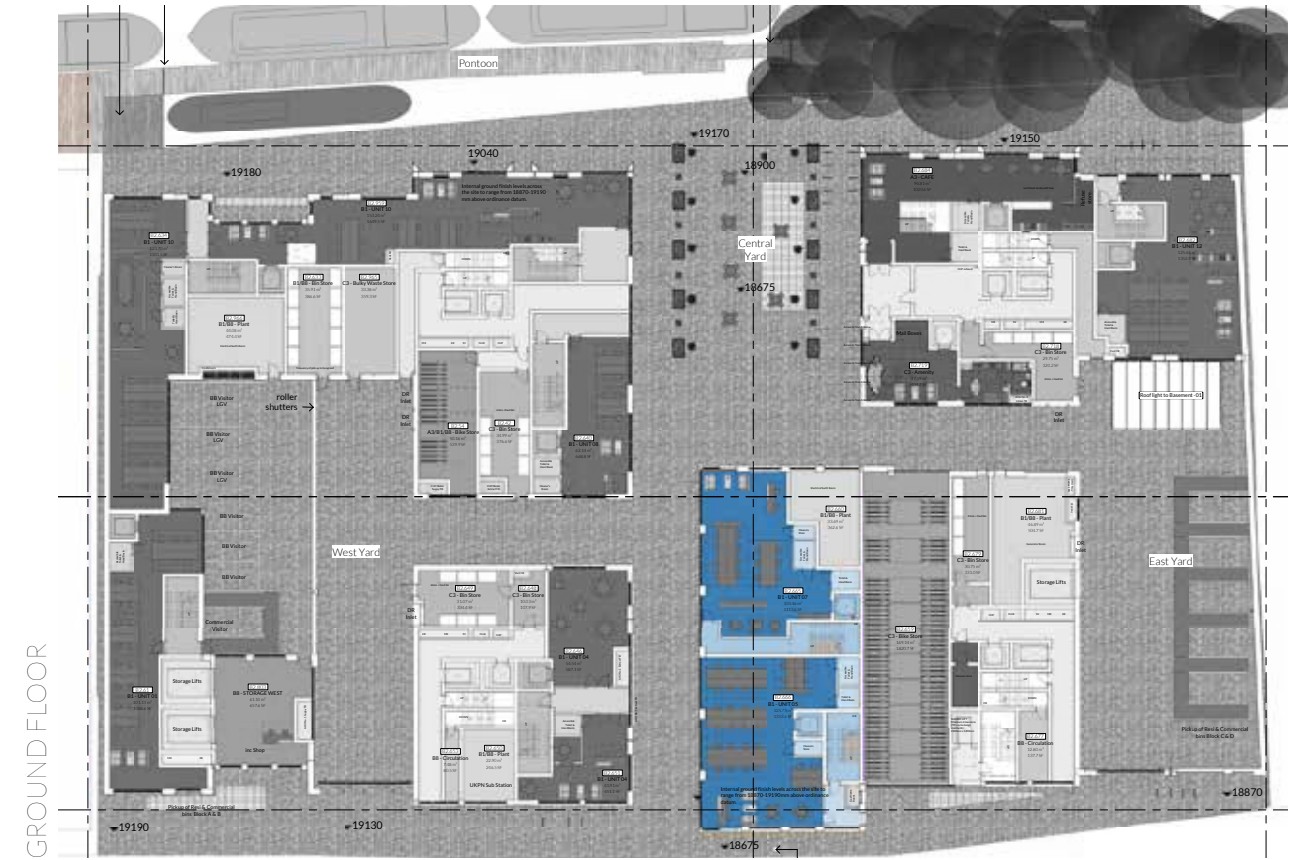


Level 01

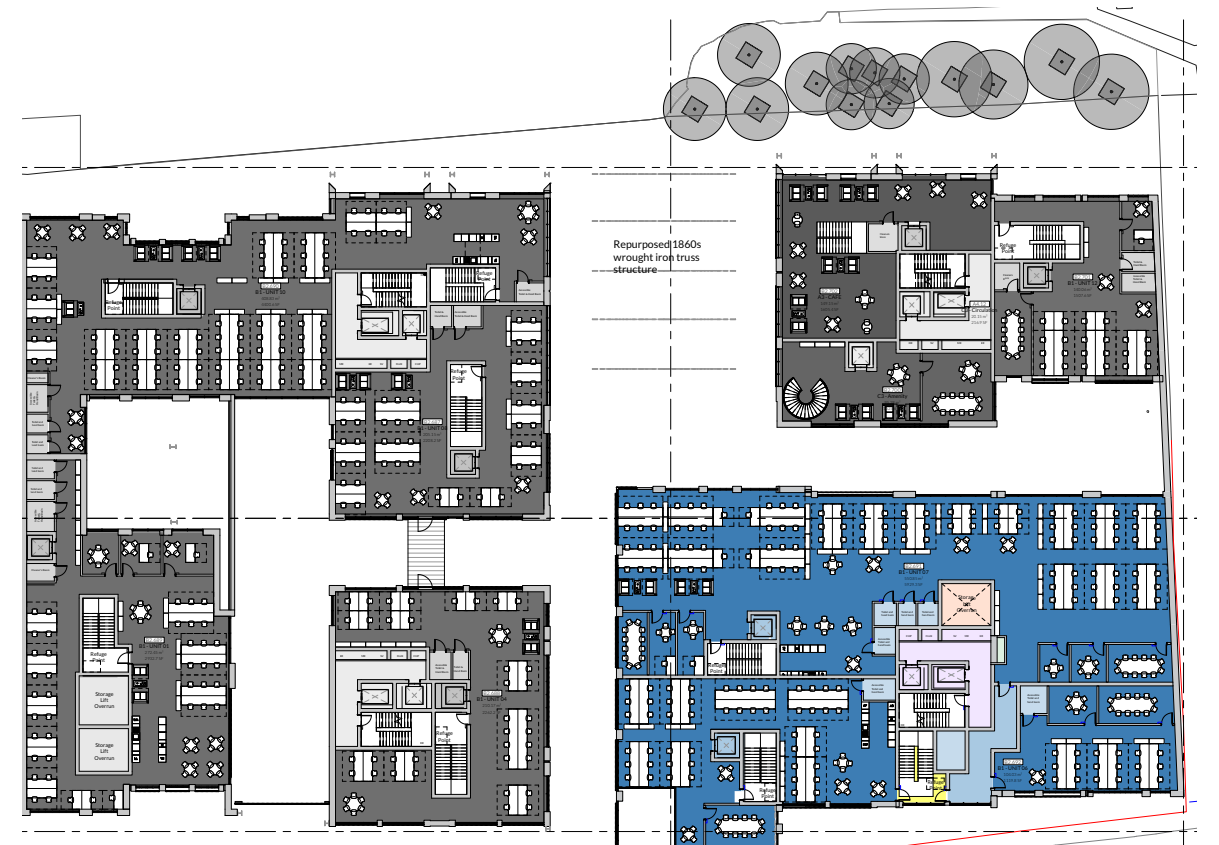


Flexible Workspace

Remembering of scale and character of the current 20th century concrete warehouse building to create a flexible and affordable workspace with shared ancillary facilities.



GROUND FLOOR



FIRST FLOOR