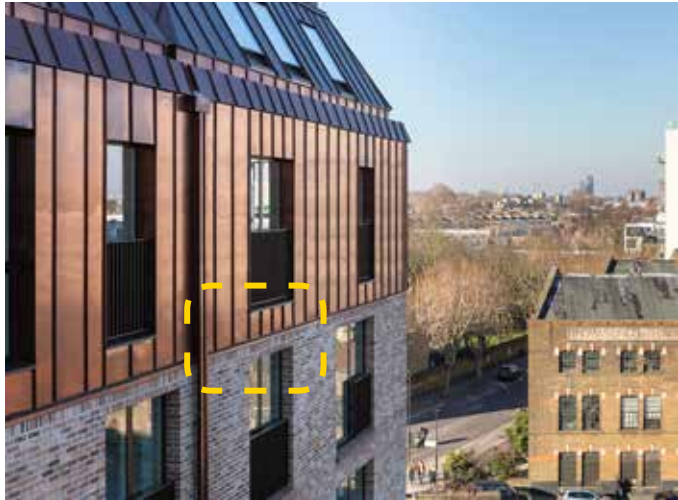
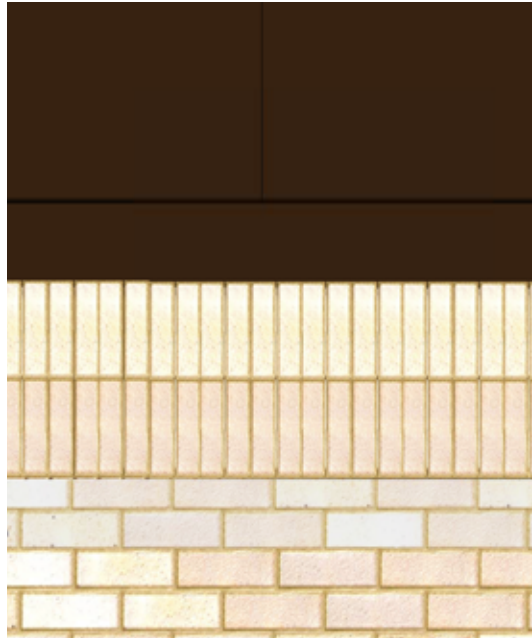


COPPER ROOF INTERFACE WITH BRICKWORK

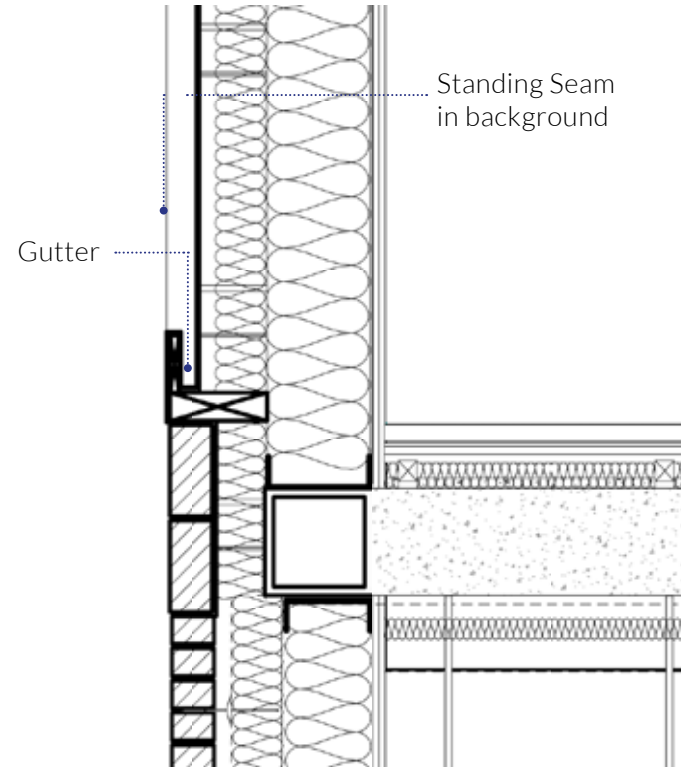
Precedent for copper roof interface and brick soldier course detail



copper roof interface with brickwork soldier course detail elevation



copper roof interface with brickwork soldier course detail

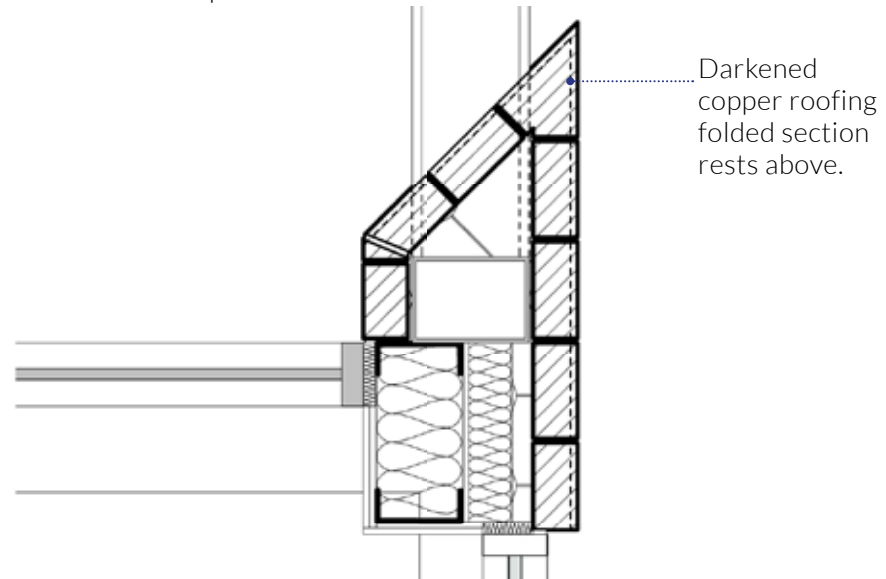


BEVELLED FRAME AND BRICK PIER

brick pier and bevelled copper frame interface assembly



brick pier plan detail



FACADE TESTING 01: BRICK COLOURS

test 01: Version 01

test 01: version 02

test 01: version 03

Varieties of colour tone using solely whites/creams/buffs (no red brick. no white painted brick)

Varieties of colour tone using solely light pinks (no white/creams/buffs. no white painted brick)

note: 2 storey building remains white brick

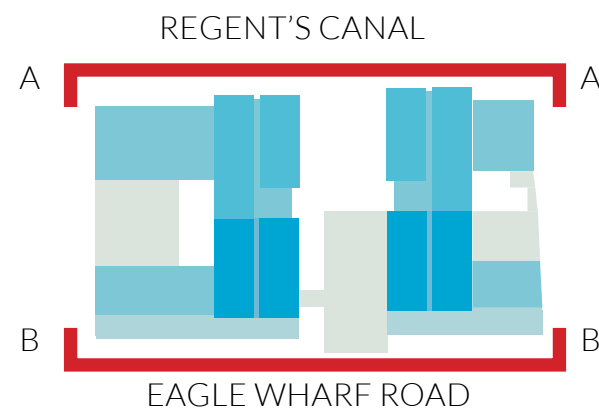
note: 2 storey building remains white brick



sew preference



sew preference



test 01: version 01

test 01: version 02

test 01: version 03

Varieties of colour tone using solely whites/creams/buffs (no red brick. no white painted brick)

Varieties of colour tone using solely light pinks (no white/creams/buffs. no white painted brick)

note: 2 storey building remains white brick

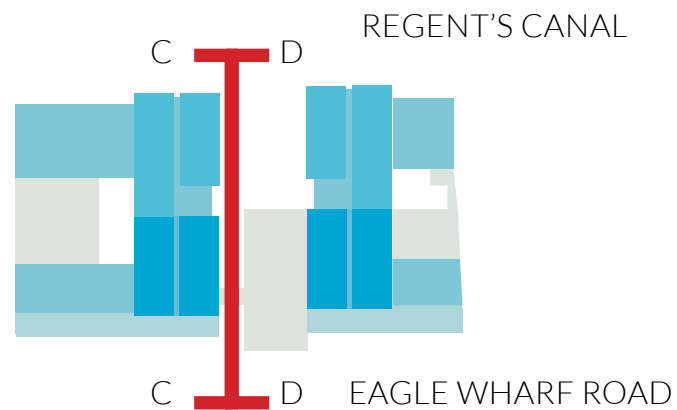
note: 2 storey building remains white brick



sew preference



sew preference



FACADE TESTING 02: BRICK LINTEL DETAILS

test 02: Version 01

test 02: Version 02

test 02: Version 03

removal of all white painted lintels

removal of white painted lintels to some areas

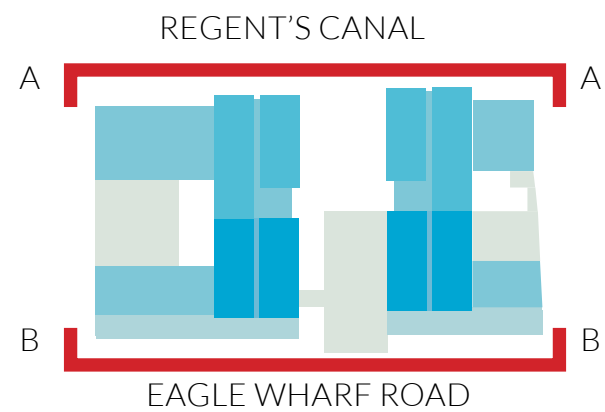


sew preference



sew preference

note: same as test 02: variation 01



test 02: Version 01

test 02: Version 02

test 02: Version 03

removal of all white painted lintels

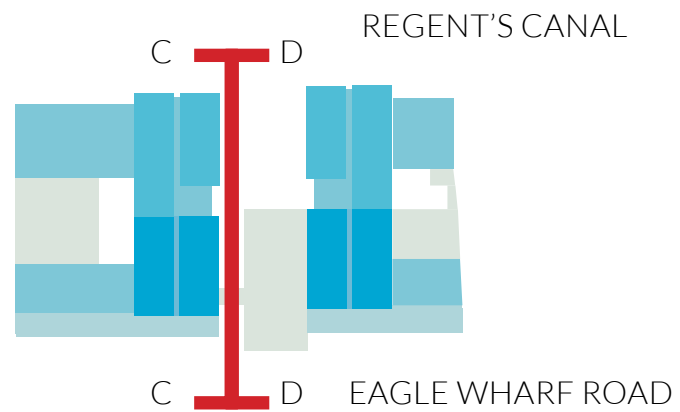
removal of white painted lintels to some areas



sew preference



sew preference



Understanding the neighbouring context - holborn studios, 49-50 eagle wharf road (CONSENTED)



ELEVATION IN COMPOSITION WITH THE EMERGING DEVELOPMENT AT HOLBORN STUDIOS

REGENTS CANAL ELEVATION



MORTIMER WHEELER HOUSE
(MUSEUM OF LONDON
ARCHIVES), 46 EAGLE WHARF
ROAD

48 EAGLE WHARF ROAD APPLICATION SITE

HOLBORN STUDIOS 49-50
EAGLE WHARF ROAD

EAGLE WHARF ROAD ELEVATION

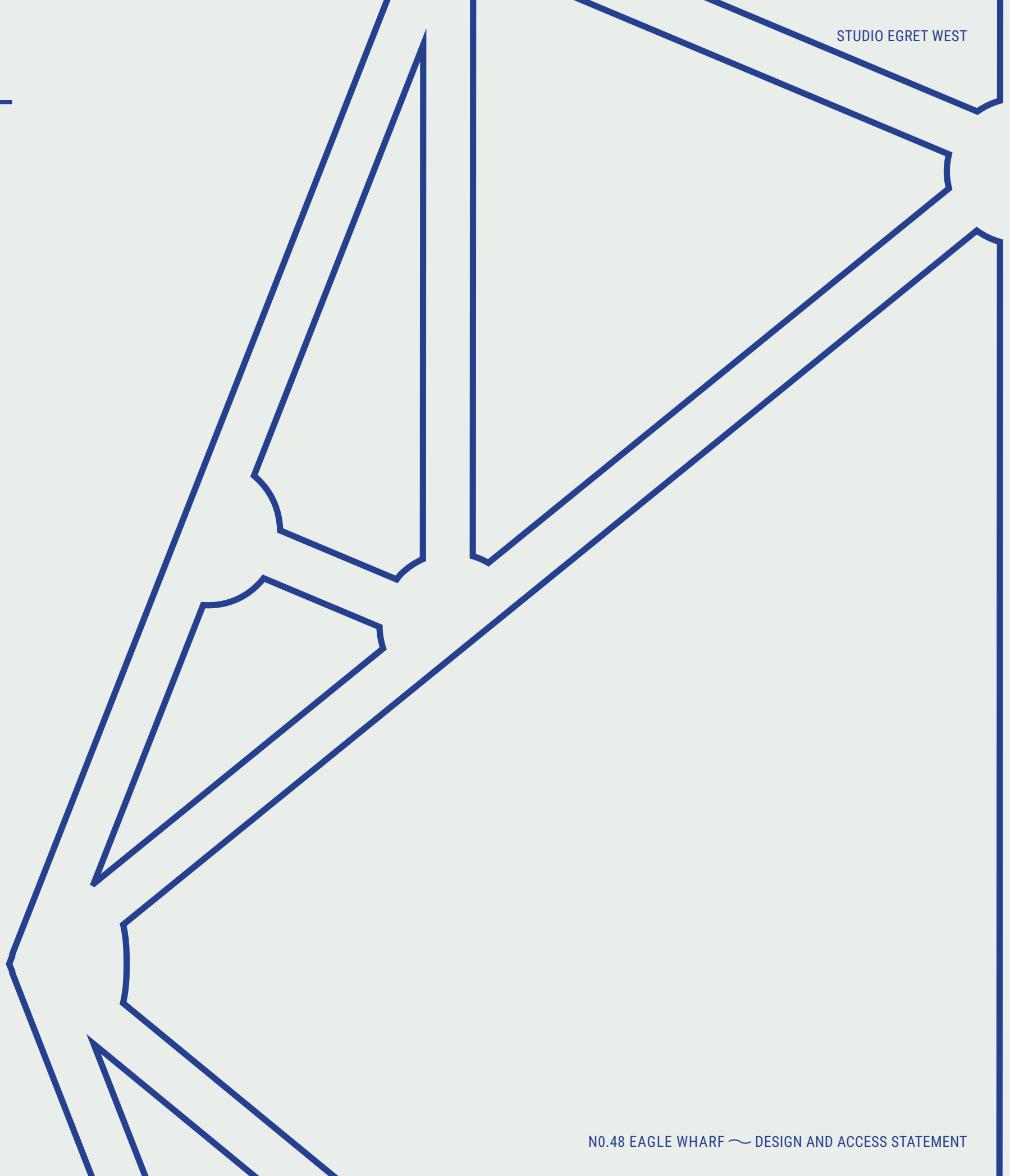


HOLBORN STUDIOS 49-50
EAGLE WHARF ROAD

48 EAGLE WHARF ROAD APPLICATION SITE

MORTIMER WHEELER HOUSE
(MUSEUM OF LONDON
ARCHIVES), 46 EAGLE WHARF
ROAD

6.0 ~ DESIGN PROPOSAL



6.1 SITE STRATEGY

Our strategic objectives for the site layout are to:

1. Arrange buildings to maximise employment floorspace;
2. Replicate and enhance the scale and architectural character of an existing warehouse, & provide a permeable site from street to canal with generous public canal side access and a public open yard;
3. Provide two working yards to create site permeability, access, and loading;
4. Improve the townscape and industrial character along the canal and conservation area with high quality workspace frontages;
5. Improve visibility both into and from the site and locate Sturt's Lock with a public cafe;
6. Connect residential cores to entrances along Eagle Wharf Road & the central yard & provide accessible parking;
7. Connect loading yard to below ground storage area.
8. Minimise proximity and overlooking to adjoining developments, acknowledging future developments on neighbouring sites, most notable the Museum of London Archives buildings; and
9. Locate the taller elements of the scheme in a way that reduces overshadowing of neighbouring properties.

