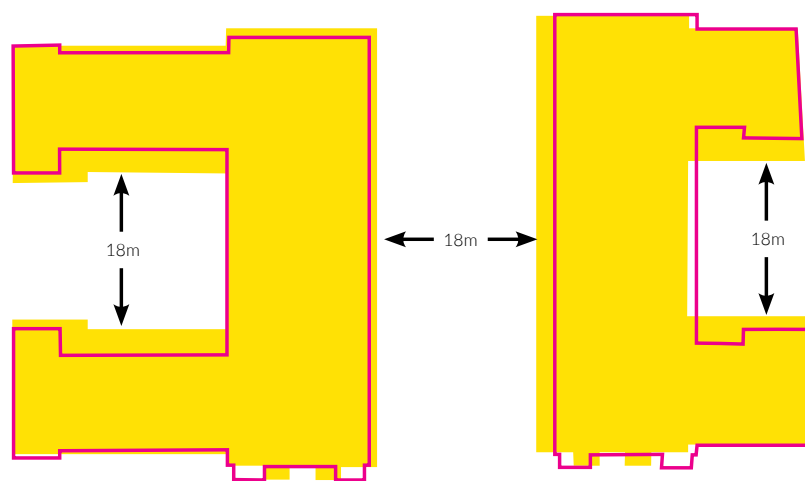


Holborn Studios, 7 Storey Pop Up setback along Eagle Wharf Road



Building Footprint with up to 9 storey massing  
Building Footprint with up to 7 storey massing

9 STOREY VS 6 STOREY (7th STOREY POP UP TOWARD EAGLE WHARF ROAD) MASSING TEST

# 5.6 REFINED DESIGN PROPOSAL

## 9TH PRE-APPLICATION MEETING

Following a positive review of the massing changes, consultation was held in June 2019 with LB Hackney to review layout, facade treatment and detailing. Various facades tests were

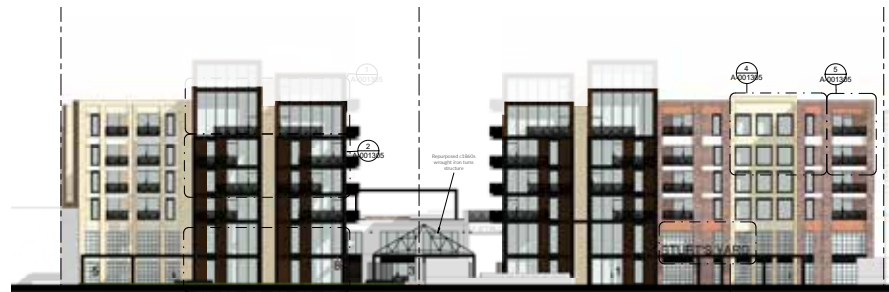
were conducted on colour and detailing with a preferred outcome shared by both council and design team that is reflected into the current design proposal. Follow up facade tests were shared and agreed upon with LB Hackney. Illustrative details and tests are provided within this section.

INITIAL ELEVATIONS

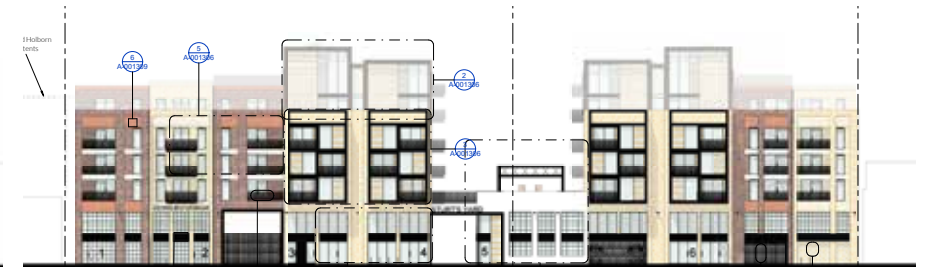
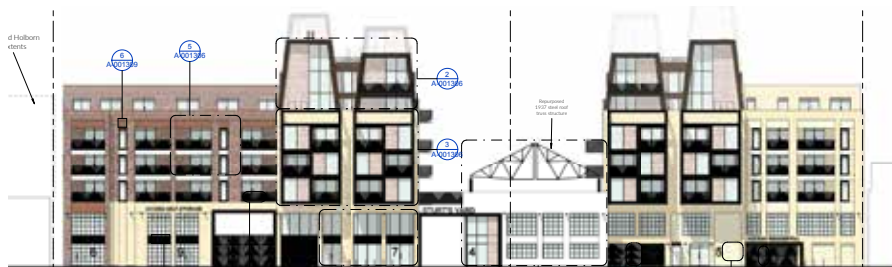
DEVELOPED ELEVATIONS

REFINED ELEVATIONS

REGENTS CANAL



Eagle WHARF ROAD



STRUT'S YARD WEST



STRUT'S YARD EAST

