

1 Level 02 FFL
1 : 200

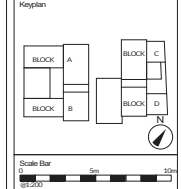


- A3 - Amenity
- A3 - CAFE
- A3 - Vertical Circulation
- B1 - UNIT 01 - Amenity
- B1 - UNIT 01 - Vertical Circulation
- B1 - UNIT 02
- B1 - Unit 02 - Amenity
- B1 - Unit 02 - Vertical Circulation
- B1 - UNIT 03
- B1 - Unit 03 - Amenity
- B1 - Unit 03 - Vertical Circulation
- B1 - UNIT 04
- B1 - Unit 04 - Amenity
- B1 - Unit 04 - Vertical Circulation
- B1 - UNIT 05
- B1 - Unit 05 - Amenity
- B1 - Unit 05 - Vertical Circulation
- B1 - UNIT 06
- B1 - Unit 06 - Amenity
- B1 - Unit 06 - Vertical Circulation
- B1 - UNIT 07
- B1 - Unit 07 - Amenity
- B1 - Unit 07 - Vertical Circulation
- B1 - UNIT 08
- B1 - Unit 08 - Amenity
- B1 - Unit 08 - Vertical Circulation
- B1 - UNIT 10
- B1 - Unit 10 - Amenity
- B1 - Unit 10 - Vertical Circulation
- B1 - UNIT 12
- B1 - Unit 12 - Amenity
- B1 - Unit 12 - Vertical Circulation
- B1/B8 - Bike Store
- B1/B8 - Bin Store
- B1/B8 - Plant
- B1/B8 - Riser
- B1/B8 - Smoke Vent
- B1/B8/C3 - Circulation
- B1/B8/C3 - Vertical Circulation
- B8 - Circulation
- B8 - Riser
- B8 - STORAGE EAST
- B8 - STORAGE WEST
- B8 - Vertical Circulation
- C3 - 052P
- C3 - 1B2P
- C3 - 2B3P
- C3 - 2B4P
- C3 - 3B4P
- C3 - 3B5P
- C3 - 3B6P
- C3 - Amenity
- C3 - Bike Store
- C3 - Bin Store
- C3 - Bulky Waste Store
- C3 - Circulation
- C3 - Risers
- C3 - Vertical Circulation

General Notes
 1. This drawing is for the use of the architect only. It is not to be used for construction or for any other purpose without the written consent of the architect.
 2. The architect is not responsible for the accuracy of the information provided by the client.
 3. The architect is not responsible for the accuracy of the information provided by the client.
 4. The architect is not responsible for the accuracy of the information provided by the client.
 5. The architect is not responsible for the accuracy of the information provided by the client.

Notes
 Planning Application Boundary
 Area of Impairment to be removed and replaced in accordance with agreement
 Note:
 User Class Definitions:
 A3 - Cafe
 B1 - Office
 B8 - Storage
 C3 - Residential
 NB: Areas calculate only the following "unit" or "room" types:
 • A3 - CAFE
 • B1 - UNIT 01
 • B8 - STORAGE
 • C3 - 052P
 All other "unit" or "room" types are non-unit areas.
 NOTE: Structural information is shown indicatively and will coordinate with the architectural design of the next design stage.

Rev	Date	Reason for Issue	By
P4	15.02.21	Bin quantities updated. Minor window shift.	AP
P3	16.06.20	For Planning	AP
P2	10.02.20	Scale Bars Added	AP
P1	24.07.19	For Planning	AP
P0	12.05.18	For Planning	AP
		Rev Date	Reason for Issue



Client
Access Storage

Project
0276 Sturt's Yard

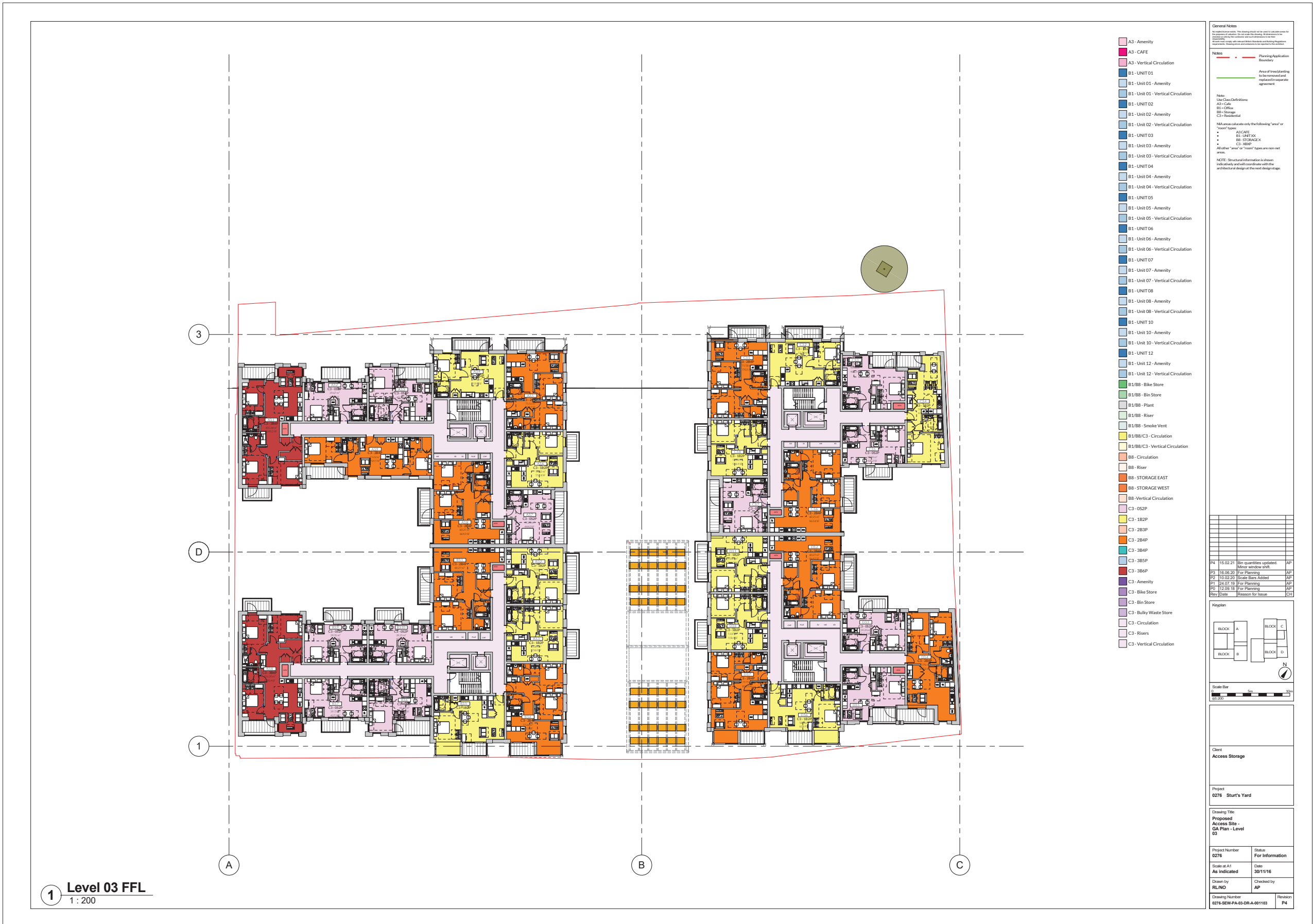
Drawing Title
Proposed Access Site - GA Plan - Level 02

Project Number	Status
0276	For Information

Scale at A1	Date
As Indicated	30/11/16

Drawn by	Checked by
RL/NO	AP

Drawing Number	Revision
0276-SHW-PA-02-DR-A-001102	P4



- A3 - Amenity
- A3 - CAFE
- A3 - Vertical Circulation
- B1 - UNIT 01
- B1 - Unit 01 - Amenity
- B1 - UNIT 02
- B1 - Unit 02 - Vertical Circulation
- B1 - UNIT 03
- B1 - Unit 03 - Amenity
- B1 - Unit 03 - Vertical Circulation
- B1 - UNIT 04
- B1 - Unit 04 - Amenity
- B1 - Unit 04 - Vertical Circulation
- B1 - UNIT 05
- B1 - Unit 05 - Amenity
- B1 - Unit 05 - Vertical Circulation
- B1 - UNIT 06
- B1 - Unit 06 - Amenity
- B1 - Unit 06 - Vertical Circulation
- B1 - UNIT 07
- B1 - Unit 07 - Amenity
- B1 - Unit 07 - Vertical Circulation
- B1 - UNIT 08
- B1 - Unit 08 - Amenity
- B1 - Unit 08 - Vertical Circulation
- B1 - UNIT 10
- B1 - Unit 10 - Amenity
- B1 - Unit 10 - Vertical Circulation
- B1 - UNIT 12
- B1 - Unit 12 - Amenity
- B1 - Unit 12 - Vertical Circulation
- B1/BB - Bike Store
- B1/BB - Bin Store
- B1/BB - Plant
- B1/BB - Riser
- B1/BB - Smoke Vent
- B1/BB/C3 - Circulation
- B1/BB/C3 - Vertical Circulation
- BB - Circulation
- BB - Riser
- BB - STORAGE EAST
- BB - STORAGE WEST
- BB - Vertical Circulation
- C3 - 052P
- C3 - 1B2P
- C3 - 2B4P
- C3 - 3B4P
- C3 - 3B5P
- C3 - 3B6P
- C3 - Amenity
- C3 - Bike Store
- C3 - Bin Store
- C3 - Bulky Waste Store
- C3 - Circulation
- C3 - Risers
- C3 - Vertical Circulation

General Notes
 This drawing shall be used to submit applications for the purposes of zoning. It is not to be used for construction or other purposes without the approval of the relevant authorities. All dimensions are in millimeters unless otherwise stated. All dimensions are to be taken from the center of the object unless otherwise stated. All dimensions are to be taken from the center of the object unless otherwise stated.

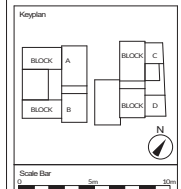
Notes
 Planning Application Boundary
 Area of freehold land to be borrowed and retained in separate agreement

Notes:
 Unit Class Definitions:
 A3 - Cafe
 B1 - Office
 BB - Storage
 C3 - Residential

*All areas calculate only the following "and" or "room" types:
 • A3 - CAFE
 • B1 - UNIT 01
 • B1 - STORAGE
 • C3 - MBP
 All other "and" or "room" types are non-vet areas.

NOTE: Structural information is shown indicatively and will coordinate with the architectural design at the next design stage.

Rev	Date	Reason for Issue	CH
P4	15.02.21	Bin quantities updated. Minor window shift.	AP
P3	16.06.20	For Planning	AP
P2	10.02.20	Scale Bars Added	AP
P1	24.07.19	For Planning	AP
P0	12.05.18	For Planning	AP



Client	
Access Storage	
Project	
0276 Sturt's Yard	
Drawing Title	
Proposed Access Site - GA Plan - Level 03	
Project Number	Status
0276	For Information
Scale at A1	Date
As Indicated	30/11/16
Drawn by	Checked by
RL/NO	AP
Drawing Number	Revision
0276-SEW-PA-03-DR-A-001103	P4

1 Level 03 FFL
 1 : 200

1 Level 04 FFL
1:200

- A3 - Amenity
- A3 - CAFE
- B1 - Vertical Circulation
- B1 - UNIT 01
- B1 - Unit 01 - Amenity
- B1 - Unit 01 - Vertical Circulation
- B1 - UNIT 02
- B1 - Unit 02 - Amenity
- B1 - Unit 02 - Vertical Circulation
- B1 - UNIT 03
- B1 - Unit 03 - Amenity
- B1 - Unit 03 - Vertical Circulation
- B1 - UNIT 04
- B1 - Unit 04 - Amenity
- B1 - Unit 04 - Vertical Circulation
- B1 - UNIT 05
- B1 - Unit 05 - Amenity
- B1 - Unit 05 - Vertical Circulation
- B1 - UNIT 06
- B1 - Unit 06 - Amenity
- B1 - Unit 06 - Vertical Circulation
- B1 - UNIT 07
- B1 - Unit 07 - Amenity
- B1 - Unit 07 - Vertical Circulation
- B1 - UNIT 08
- B1 - Unit 08 - Amenity
- B1 - Unit 08 - Vertical Circulation
- B1 - UNIT 10
- B1 - Unit 10 - Amenity
- B1 - Unit 10 - Vertical Circulation
- B1 - UNIT 12
- B1 - Unit 12 - Amenity
- B1 - Unit 12 - Vertical Circulation
- B1/B8 - Bike Store
- B1/B8 - Bin Store
- B1/B8 - Plant
- B1/B8 - Risers
- B1/B8 - Smoke Vent
- B1/B8/C3 - Circulation
- B1/B8/C3 - Vertical Circulation
- B8 - Circulation
- B8 - Risers
- B8 - STORAGE EAST
- B8 - STORAGE WEST
- B8 - Vertical Circulation
- C3 - 052P
- C3 - 182P
- C3 - 283P
- C3 - 284P
- C3 - 384P
- C3 - 385P
- C3 - 386P
- C3 - Amenity
- C3 - Bike Store
- C3 - Bin Store
- C3 - Bulky Waste Store
- C3 - Circulation
- C3 - Risers
- C3 - Vertical Circulation

General Notes
 1. This drawing shall be used in accordance with the provisions of the contract documents and the provisions of the contract documents and the provisions of the contract documents.
 2. All dimensions shall be in feet and inches.
 3. All dimensions shall be in feet and inches.
 4. All dimensions shall be in feet and inches.
 5. All dimensions shall be in feet and inches.

Notes
 - - - Planning Application Boundary
 - - - Area of investigation to be reviewed and replaced in separate agreement

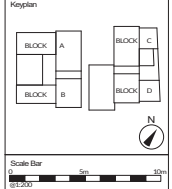
Note:
 Use Class Definitions:
 A3 - Cafe
 B1 - Office
 B8 - Storage
 C3 - Residential

N/A areas calculate only the following "area" or "room" types:
 • A3 - CAFE
 • B1 - UNITX
 • B8 - STORAGEX
 • C3 - RESID

All other "area" or "room" types are reserved areas.

NOTE: Structural information is shown individually and will coordinate with the architectural design of the next design stage.

Rev	Date	Reason for Issue	CH
P4	15.02.21	Bin quantities updated. Minor window shift.	AP
P3	16.06.20	For Planning	AP
P2	10.02.20	Scale Bars Added	AP
P1	24.07.19	For Planning	AP
P0	12.08.18	For Planning	AP
		Rev Date	Reason for Issue



Client	
Access Storage	
Project	
0276 Sturt's Yard	
Drawing Title	
Proposed Access Site - GA Plan - Level 04	
Project Number	Status
0276	For Information
Scale at A1	Date
As Indicated	10/03/16
Drawn by	Checked by
RL/NO	AP
Drawing Number	Revision
0276-SHW-PA-04-DR-A-001104	P4



- A3 - Amenity
- A3 - CAFE
- A3 - Vertical Circulation
- B1 - Unit 01 - Amenity
- B1 - Unit 01 - Vertical Circulation
- B1 - UNIT02
- B1 - Unit 02 - Amenity
- B1 - Unit 02 - Vertical Circulation
- B1 - UNIT03
- B1 - Unit 03 - Amenity
- B1 - Unit 03 - Vertical Circulation
- B1 - UNIT04
- B1 - Unit 04 - Amenity
- B1 - Unit 04 - Vertical Circulation
- B1 - UNIT05
- B1 - Unit 05 - Amenity
- B1 - Unit 05 - Vertical Circulation
- B1 - UNIT06
- B1 - Unit 06 - Amenity
- B1 - Unit 06 - Vertical Circulation
- B1 - UNIT07
- B1 - Unit 07 - Amenity
- B1 - Unit 07 - Vertical Circulation
- B1 - UNIT08
- B1 - Unit 08 - Amenity
- B1 - Unit 08 - Vertical Circulation
- B1 - UNIT10
- B1 - Unit 10 - Amenity
- B1 - Unit 10 - Vertical Circulation
- B1 - UNIT12
- B1 - Unit 12 - Amenity
- B1 - Unit 12 - Vertical Circulation
- B1/BB - Bike Store
- B1/BB - Bin Store
- B1/BB - Plant
- B1/BB - Riser
- B1/BB - Smoke Vent
- B1/BB/C3 - Circulation
- B1/BB/C3 - Vertical Circulation
- BB - Circulation
- BB - Riser
- BB - STORAGE EAST
- BB - STORAGE WEST
- BB - Vertical Circulation
- C3 - 052P
- C3 - 1B2P
- C3 - 2B3P
- C3 - 2B4P
- C3 - 3B4P
- C3 - 3B5P
- C3 - 3B6P
- C3 - Amenity
- C3 - Bike Store
- C3 - Bin Store
- C3 - Bulky Waste Store
- C3 - Circulation
- C3 - Risers
- C3 - Vertical Circulation

General Notes

The information on this drawing must not be used to substitute for the services of a professional engineer or architect. It is the responsibility of the client to ensure that the information on this drawing is used for the intended purpose and is not used for any other purpose. The client is responsible for obtaining all necessary permits and approvals for the project.

Notes

--- Planning Application Boundary

--- Area of responsibility to be reviewed and approved

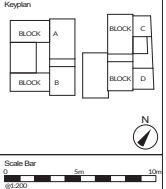
Note
 Use Class Definitions:
 A3 - Cafe
 B1 - Office
 BB - Storage
 C3 - Residential

N/A indicates only the following "area" or "room" types:
 • A3 - CAFE
 • B1 - UNIT02
 • B1 - STORAGE X
 • C3 - WOOD

All other "area" or "room" types are non-void areas.

NOTE: Structural information is shown indicatively and will coordinate with the architectural design of the final design stage.

PA	15.02.21	Bin quantities updated.	AP
BS	16.06.20	Minor window shift.	AP
P2	10.02.20	Scale bars added.	AP
P1	24.07.19	For Planning	AP
PD	12.05.18	For Planning	AP
		Rev Date	Reason for Issue
			CH



Client	
Access Storage	
Project	
0276 Sturt's Yard	
Drawing Title	
Proposed Access Site - GA Plan - Level 05	
Project Number	Status
0276	For Information
Scale at A1	Date
As Indicated	10/03/16
Drawn by	Checked by
RL/NO	AP
Drawing Number	Revision
0276-SHW-PA-05-DR-A-001106	P4

1 Level 05 FFL
1 : 200