

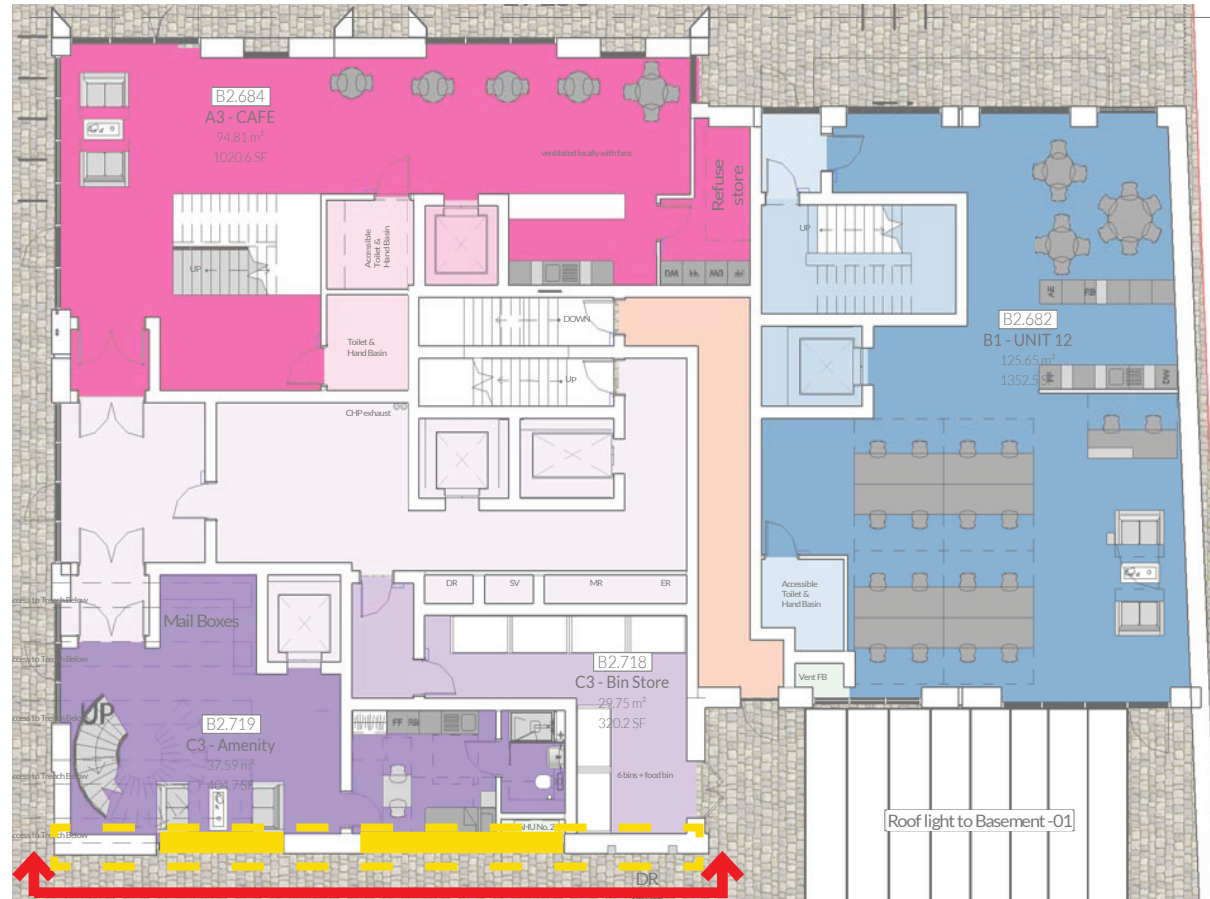
MATERIALITY AND DETAILING

EXTRACT FLUE

CONCLUSION FROM WORKSHOP:

The extract flue can extract anywhere along the cafe facade with good airflow however flexibility is provided to allow extraction to a less sensitive low level areas facing the passageway linking the Canal Yard to the East Yard (with vents zone located above the communal lobby or above the bin store). The flue will not extract to the roof due to a preference to not have visible plant or a increased parapet to disguise the flue (to avoid one roof having higher parapets than the other).

The tenure is PRS with the client maintaining ownership, operation and maintenance of all uses and will ensure best practice to mitigate smells/concerns of residential neighbours.



Potential location of louvres on less sensitive passage way linking Canal Yard to East Yard - GA Ground Floor plan



Potential location of louvres on less sensitive passage way linking Canal Yard to East Yard - GA Elevation



Extract flue location