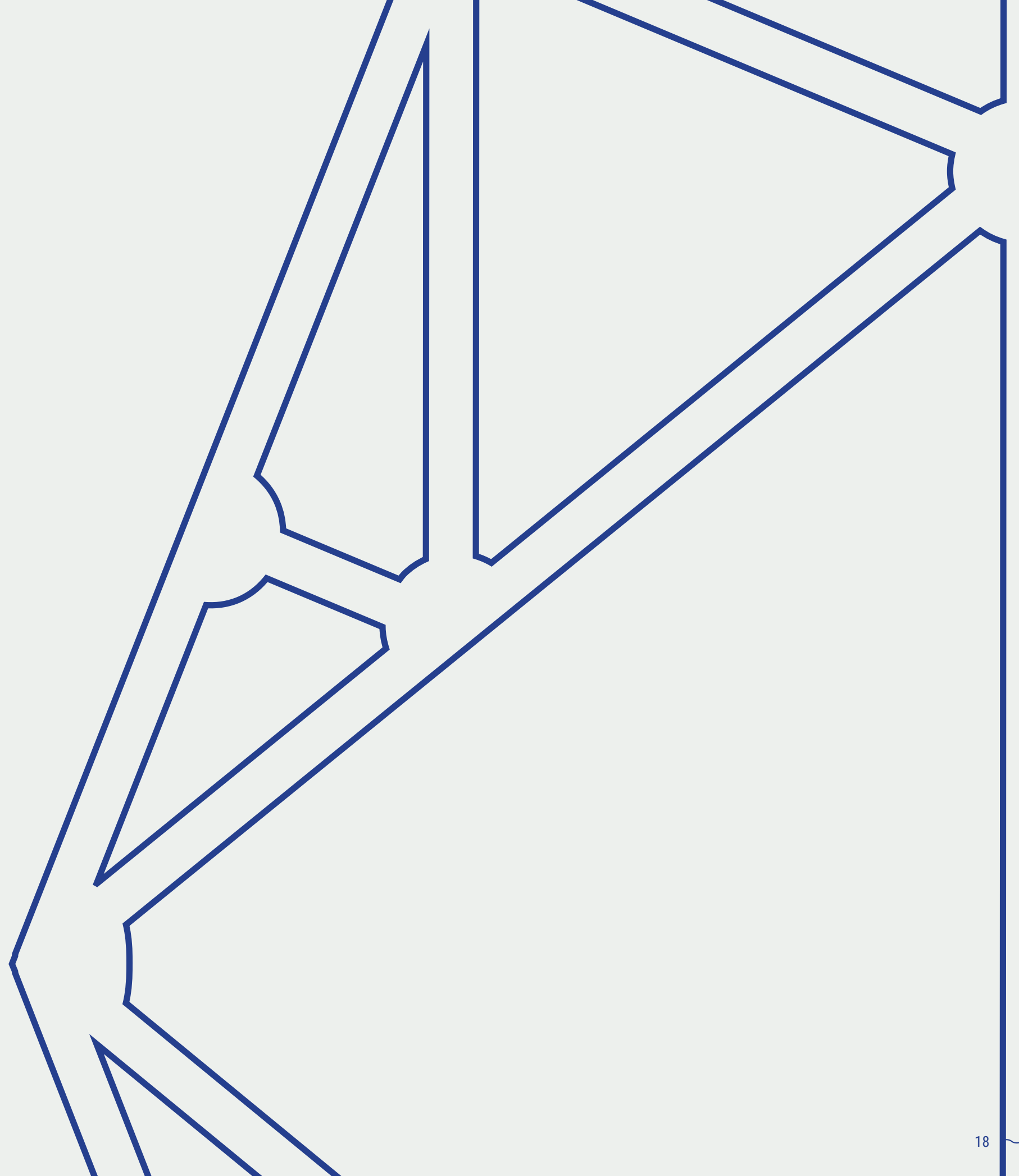


3.0 ~ DWELLINGS

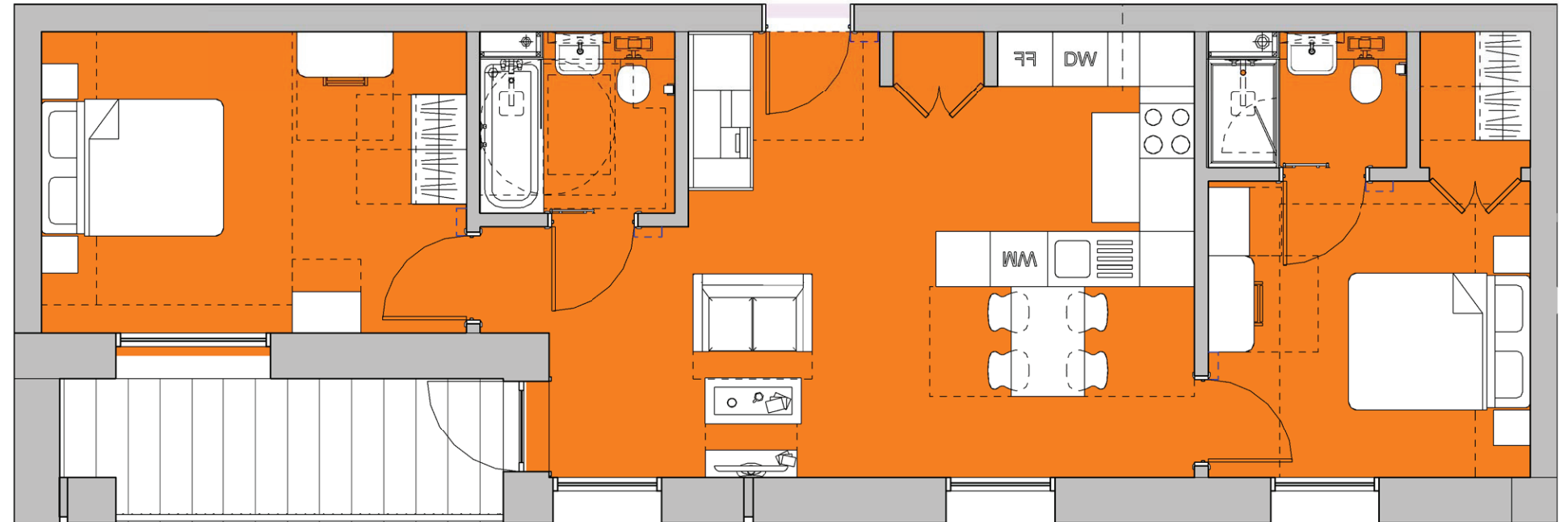


9.1 TYPICAL LAYOUT DESIGN

M4(2)

Typical 2 Bed/4 Person Units

- Designed in accordance with the :
 - Technical Housing Standards - Nationally Described Space Standard (March 2015)
 - Mayor’s Housing SPG (March 2016)
 - Building Regulations requirement M4(2) ‘Accessible and Adaptable Dwellings’
- Minimum Gross Internal Floor Area of 70 (71) sqm
- Generous Built-In Storage - minimum area of 2.0sqm
- Generous Floor to Ceiling Level
- Private Outdoor Amenity Area with a minimum depth of 1.5m

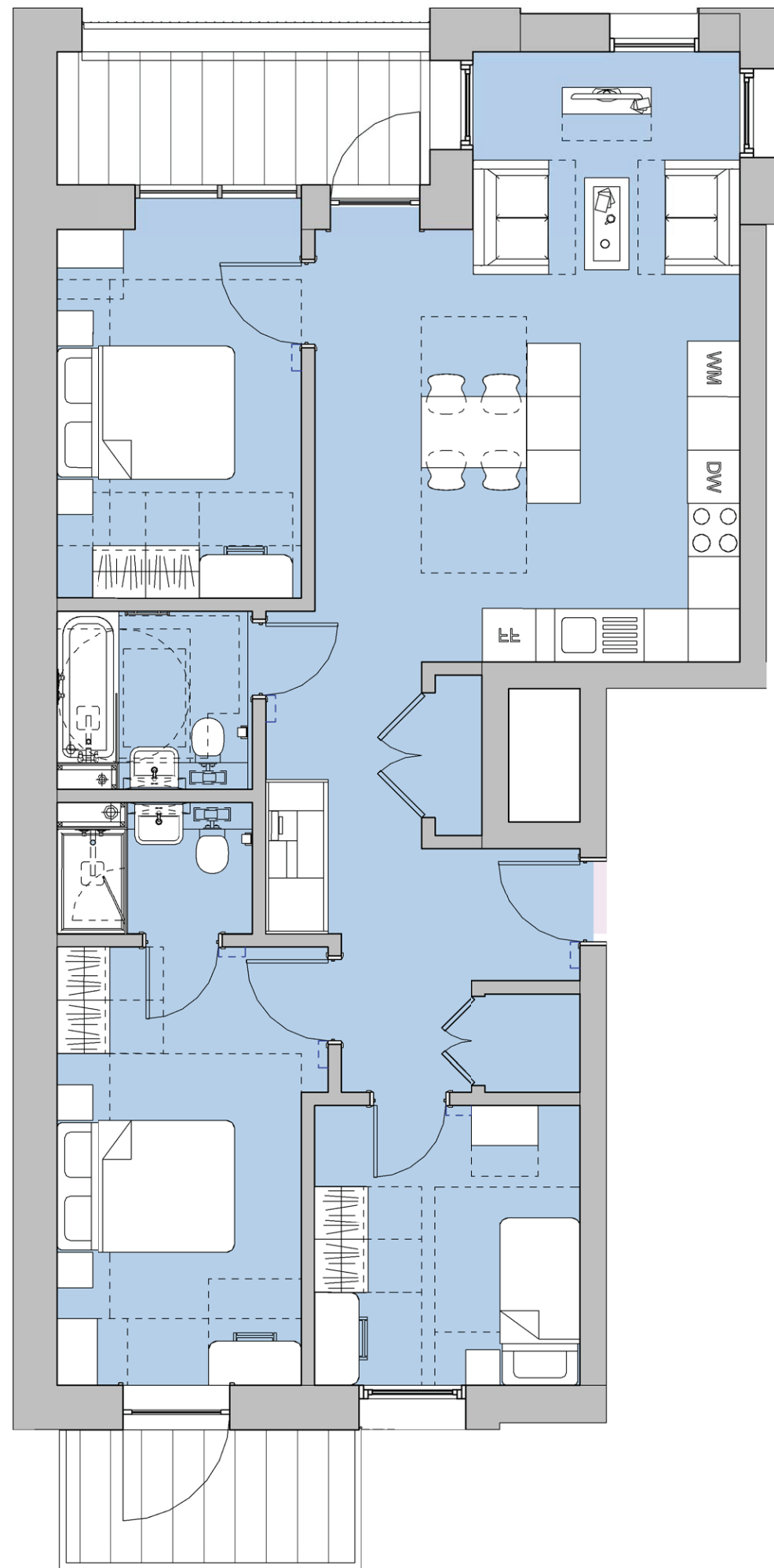


1 M4(2) Typologies - 2I
1 : 50

C3 Typology - 2I		
Level	Number	Area
Level 02 FFL	A2.9	71.02 m ²
Level 03 FFL	A3.9	71.02 m ²
Level 04 FFL	A4.9	71.02 m ²
Level 05 FFL	B5.9	71.02 m ²

Typical 3 Bed/5 Person Units

- Designed in accordance with the :
 - Technical Housing Standards - Nationally Described Space Standard (March 2015)
 - Mayor's Housing SPG (March 2016)
 - Building Regulations requirement M4(2) 'Accessible and Adaptable Dwellings'
- Minimum Gross Internal Floor Area of 86 (91) sqm
- Generous Built-In Storage - minimum area of 2.5sqm
- Generous Floor to Ceiling Level
- Private Outdoor Amenity Area with a minimum depth of 1.5m



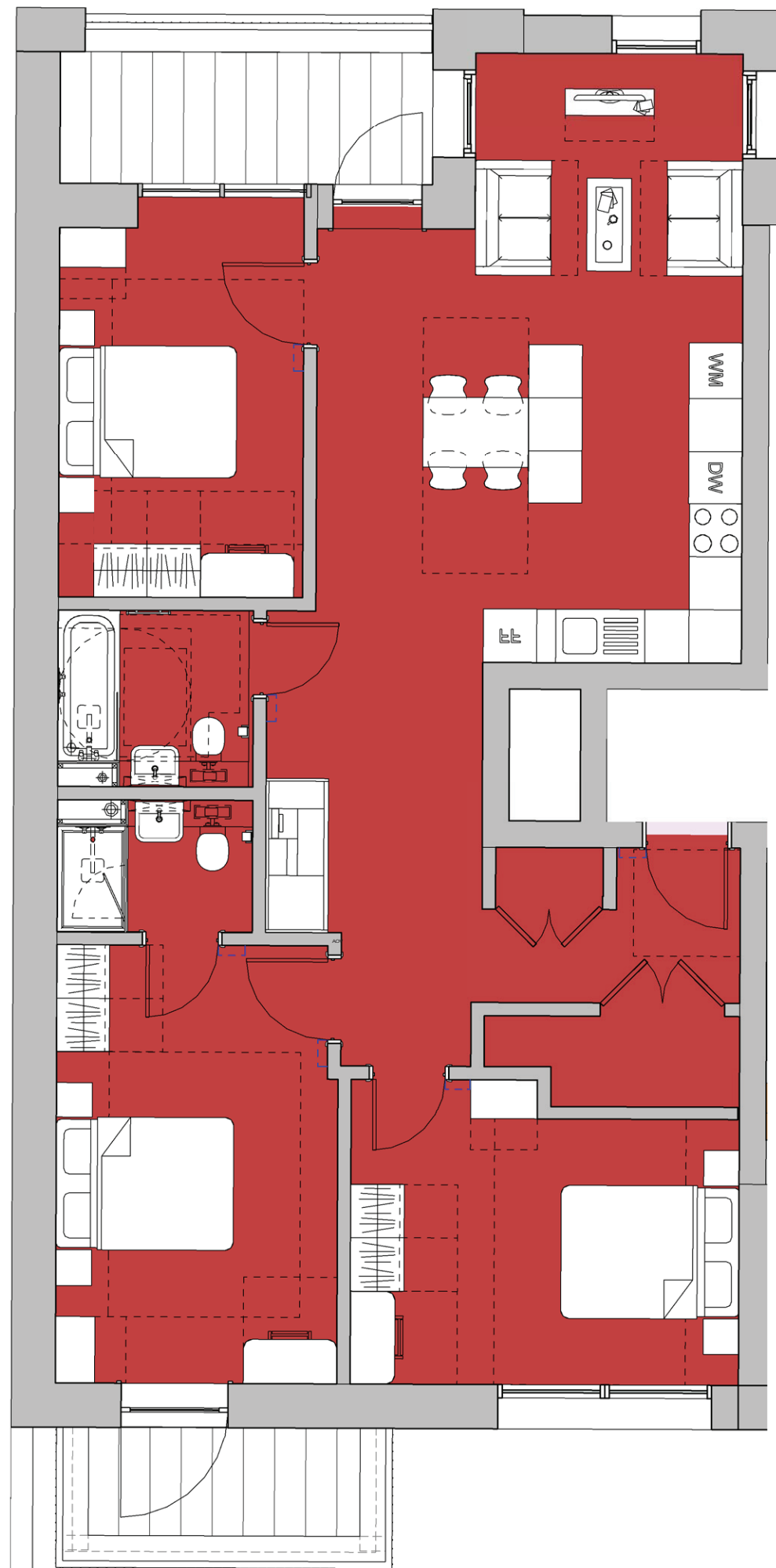
C3 Typology - 3B		
Level	Number	Area
Level 02 FFL	A2.1	90.43 m ²

2 Typology 3B Axonometric

M4(2)

Typical 3 Bed Flat/6 Person Units

- Designed in accordance with the :
 - Technical Housing Standards - Nationally Described Space Standard (March 2015)
 - Mayor's Housing SPG (March 2016)
 - Building Regulations requirement M4(2) 'Accessible and Adaptable Dwellings'
- Minimum Gross Internal Floor Area of 95 (101)sqm
- Generous Built-In Storage - minimum area of 2.5sqm
- Generous Floor to Ceiling Level
- Private Outdoor Amenity Area with a minimum depth of 1.5m



C3 Typology - 3C		
Level	Number	Area
Level 03 FFL	A3.1	101.28 m ²
Level 03 FFL	B3.8	101.30 m ²
Level 04 FFL	A4.1	101.23 m ²
Level 04 FFL	B4.8	101.32 m ²
Level 05 FFL	A5.1	101.23 m ²

1 M4(2) Typologies - 3C
1 : 50

4.0 ~ ACCESS - INCLUSIVE DESIGN

