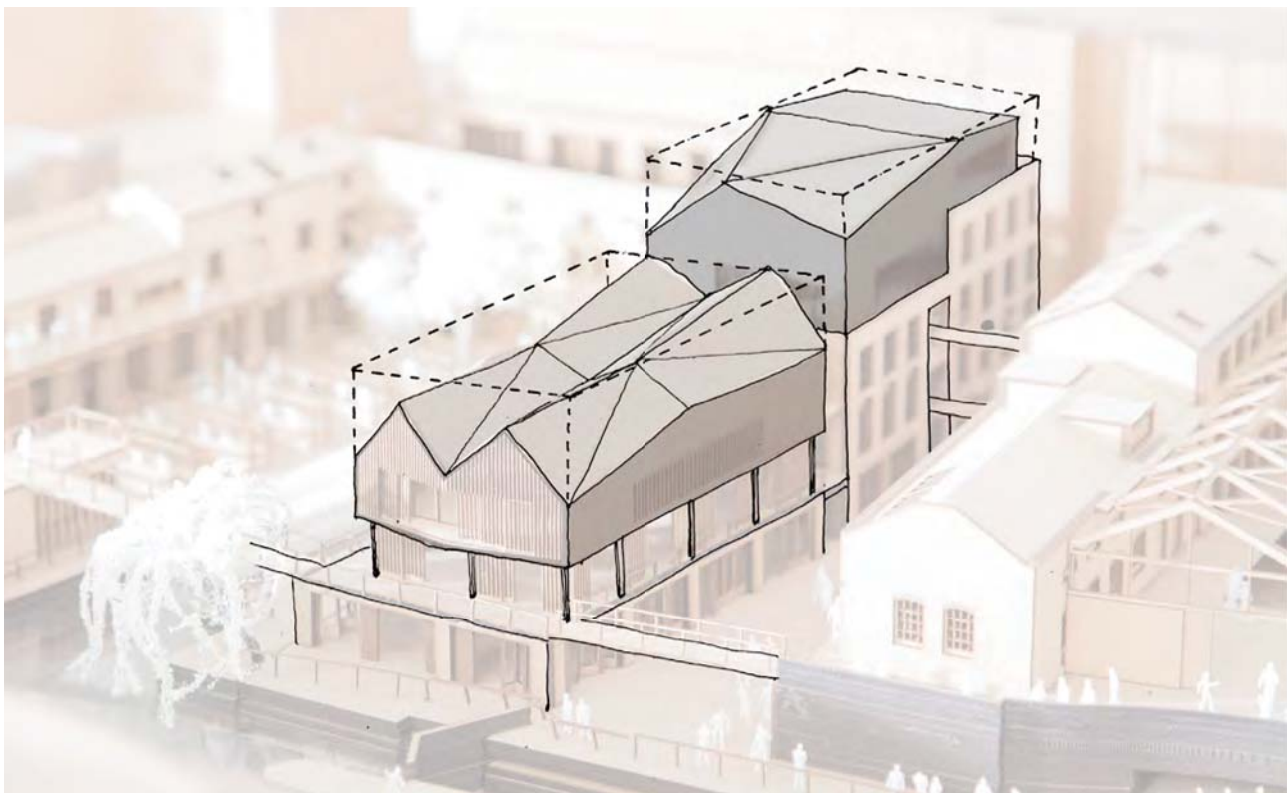
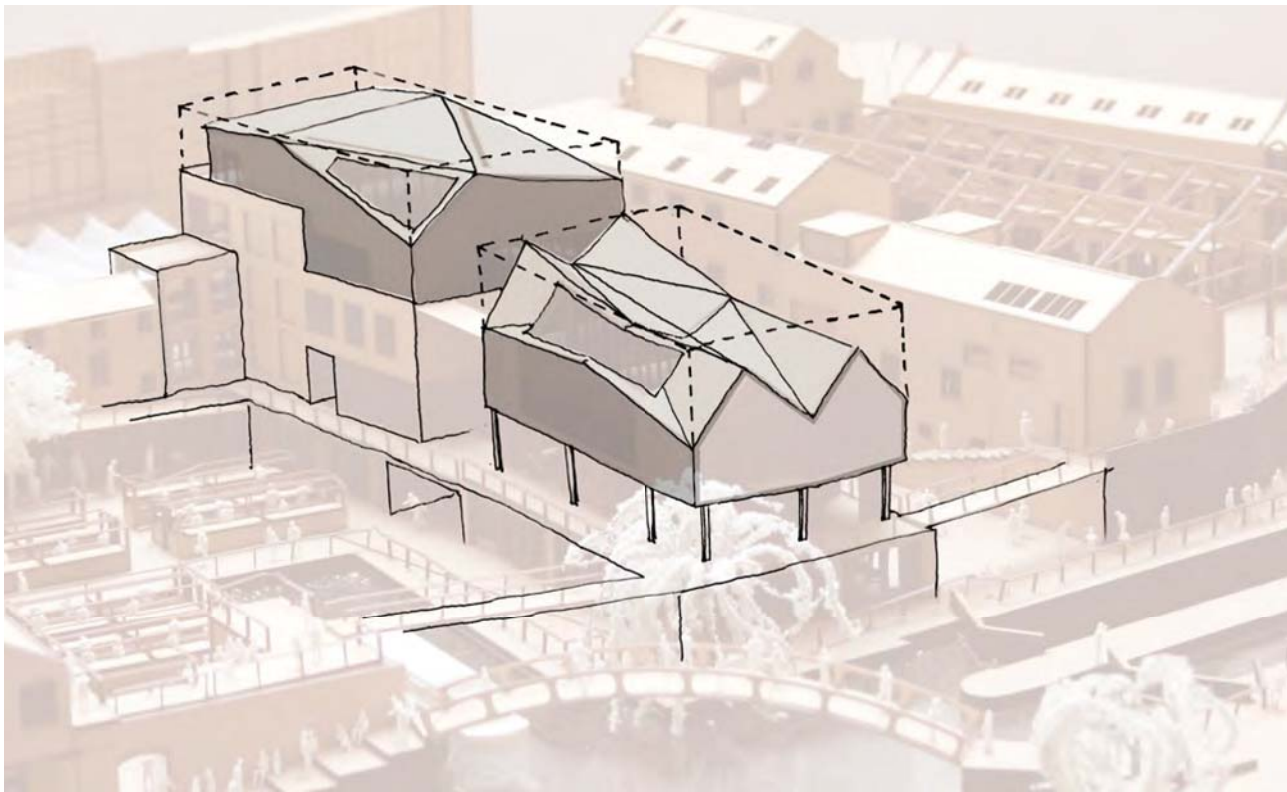
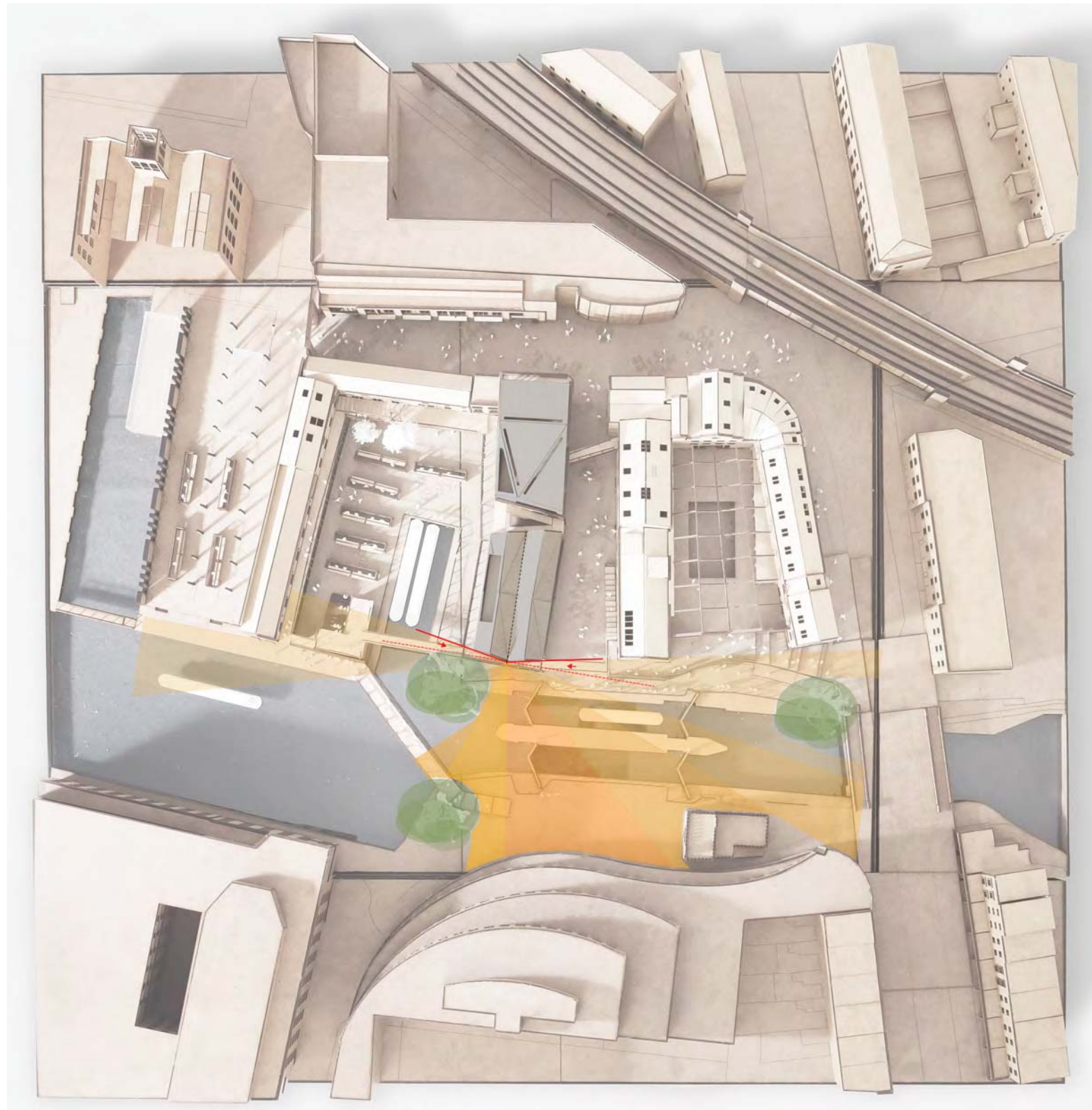




View from the Roving Bridge (top)
View from Camden High Street (above)



Sketches showing the articulated roof form (above)



Skewed views informing the kinked double gable end

5.4 Form & Height Refinements

The proposed Middle Yard Building responds to a number of massing constraints defined by the existing context. The finger-block has been broken into two volumes to respond to the contrasting character areas between Camden Lock Place and Regent's Canal. At the same time this creates a new east to west route through the site.

The southern block or Market House sits upon the ground floor level brick plinth and is set back which allows for new horizontal connections via bridges from the Market Hall all the way across to West Yard. This set back also reduces the visual impact of the building from the oblique views in which it is usually observed.

Lightweight in construction and metal clad, the Market House is designed to look in keeping with the industrial vernacular style of canalside buildings. It is also similar in scale and proportion to the existing buildings facing onto Regent's Canal.

The volume has been carefully sculpted to reduce visual impact in the key townscape views. The roof is articulated in such a way that reduces the volumetric impact on the surrounding built environment as well as the public realm. To further reduce the visual impact of the gable end from the oblique townscape views, the ends of the double gable have been angled back. In addition it affords the restaurant housed within it fantastic panoramic views over the canal.

The careful sculpting of the roof form allows the general massing to be comfortable within its setting and context whilst meeting the accommodation needs of the building to be a commercially viable proposition.

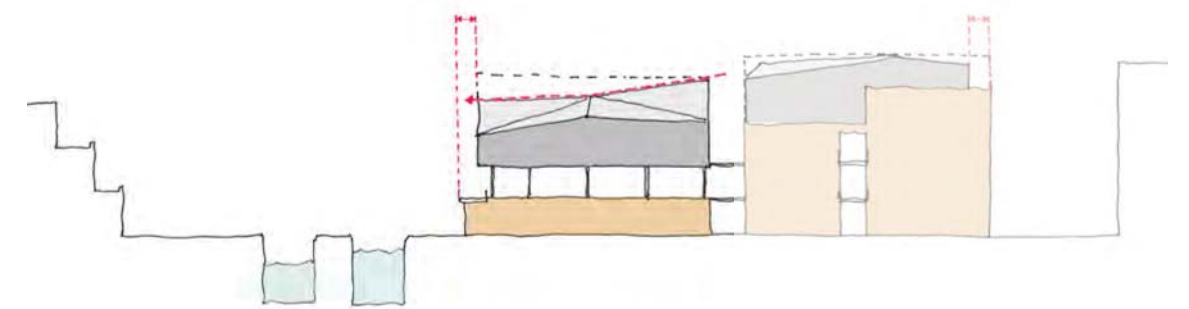
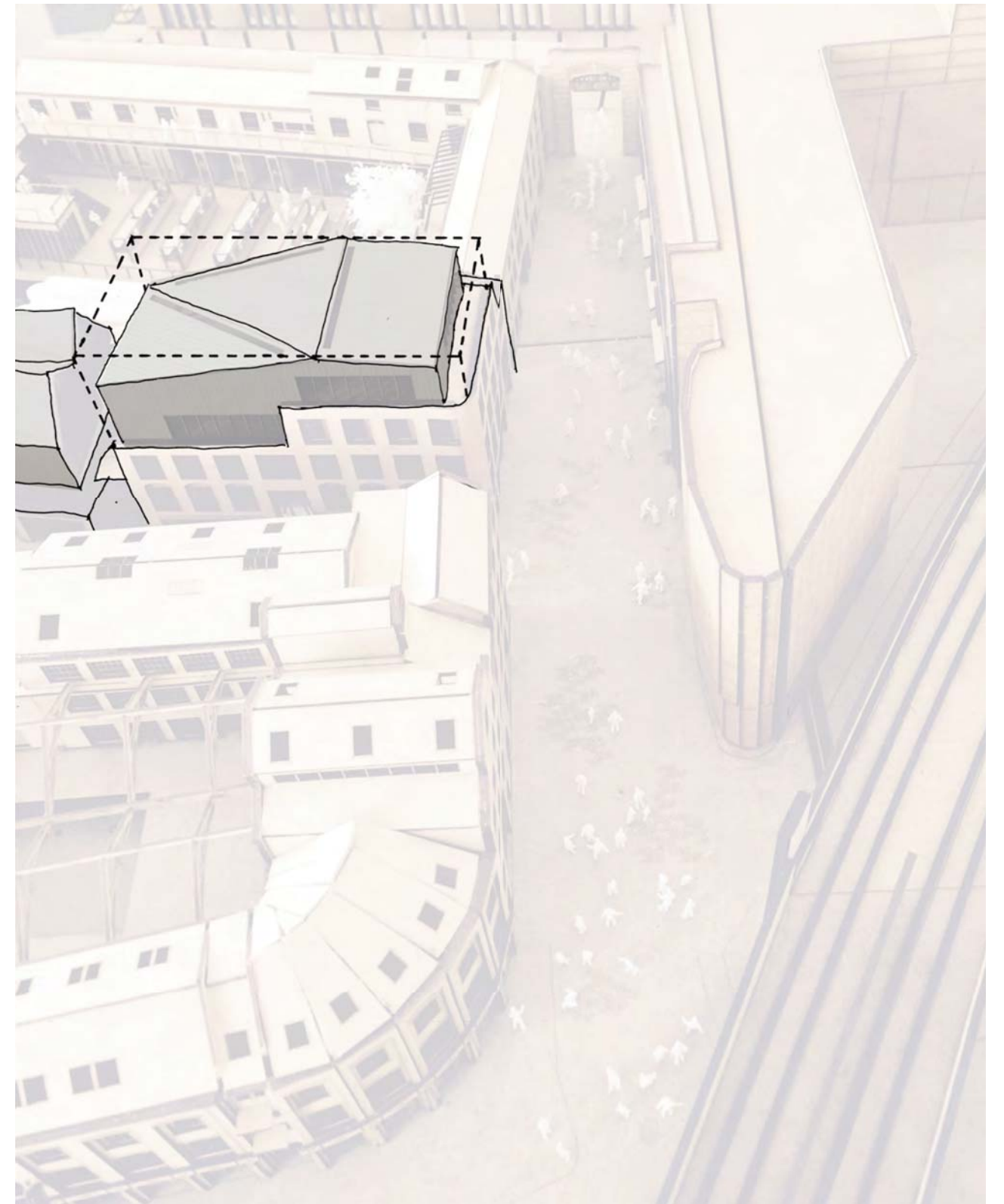


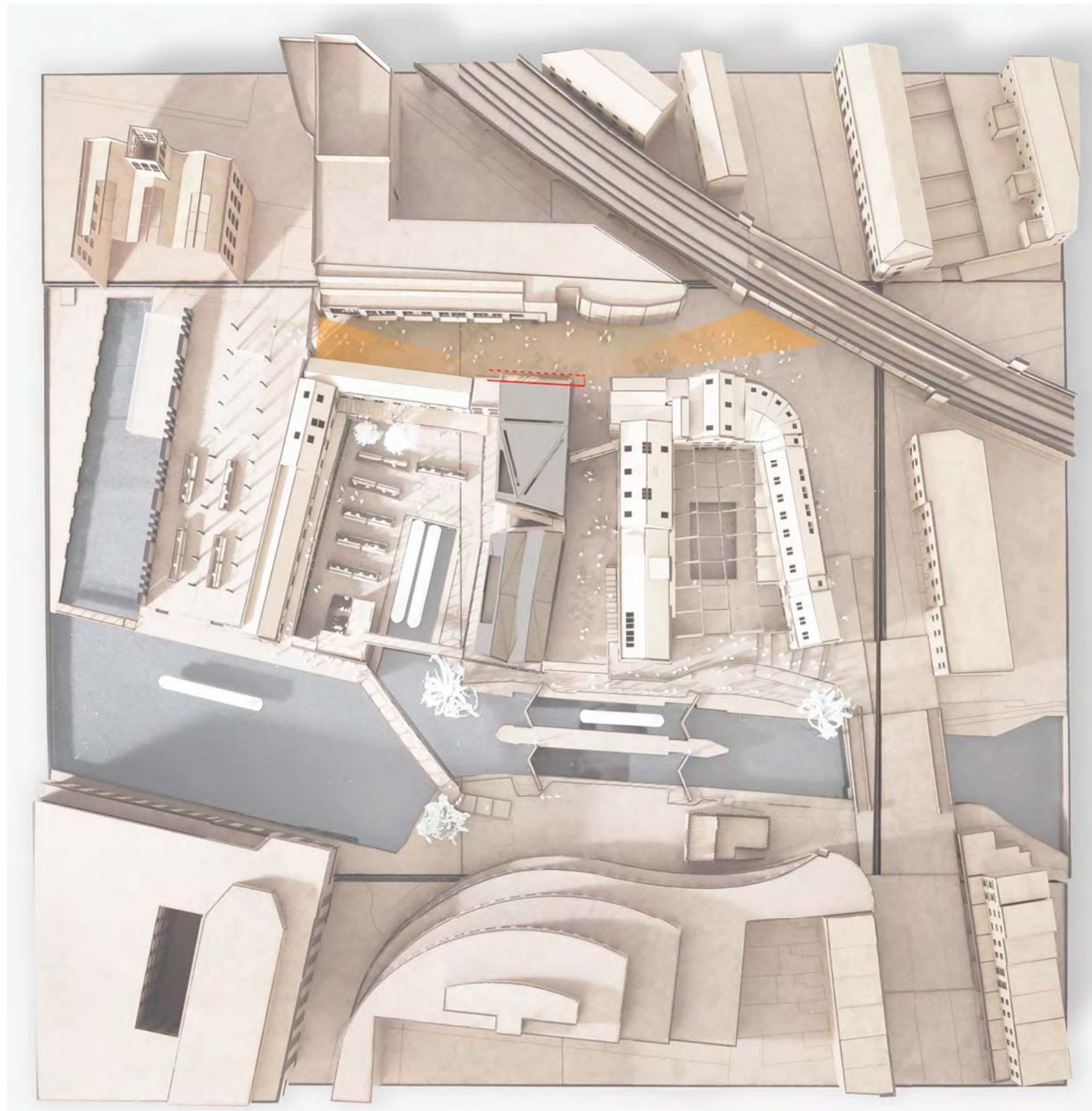
Diagram through Middle Yard showing the change in massing



View down Camden Lock Place



Sketch showing the articulated roof form



Skewed views informing the massing to Camden Lock Place

5.4 Form & Height Refinements

At the northern end, the Middle Yard Building responds to the formal character of Camden Lock Place where the scale of the Gilgamesh Building to the north and the Market Hall buildings to the east allows for a greater scale of building than that of the canalside setting.

The northern volume has been designed to respond to the oblique townscape views along Camden Lock Place. The massing of the five storey building is expressed with the lower four storeys in brick with a fifth storey set back and expressed as a roof volume to mediate the transition between the Market Hall buildings and those belonging to West Yard.

Responding to a more formal context, the northern block is more regular in form with the articulated roof form on the fifth floor and set back. The majority of the building is more solid in appearance with a larger extent of brick facade with punched windows.

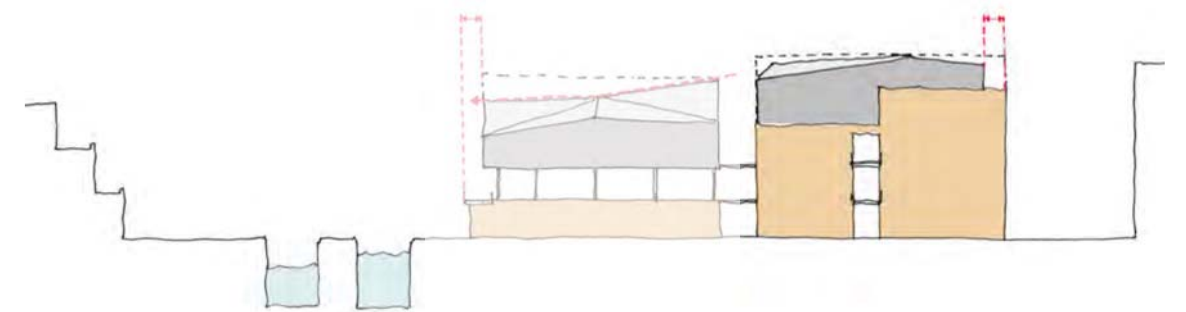


Diagram through Middle Yard showing the change in massing



Fenestration Patterns



Iteration A



Iteration B



Iteration C



Iteration D

5.5 Grain & Fenestration

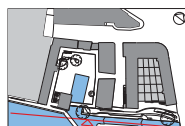
The proposed elevation for the Middle Yard Building facing onto Camden Lock Place follows the window pattern of fenestration to the existing buildings.

The pattern of windows has been further refined through the three-dimensional townscape studies shown on to the left. The iteration images demonstrate the impact that varying the facade taxis has on the oblique street views into Camden Lock Place.

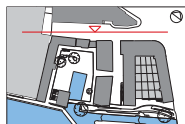
The final proposal creates window apertures that pick up with the grain of existing fenestration patterns seen either side of the new building as demonstrated in the diagram on the adjacent page.



Proposed Elevation 00 - Chalk Farm Road to Dead Dog Basin



Proposed Elevation 01 - Camden Lock Place



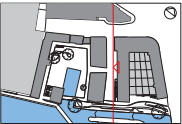
5.6 Context elevation studies



Proposed Elevation 02 - East Towards Middle Yard Building



Proposed Elevation 03 - West Towards Middle Yard Building





Punched & Articulated openings



Vertical Transition



Texture & Patina



Designed Inside Out



An Open Vessel

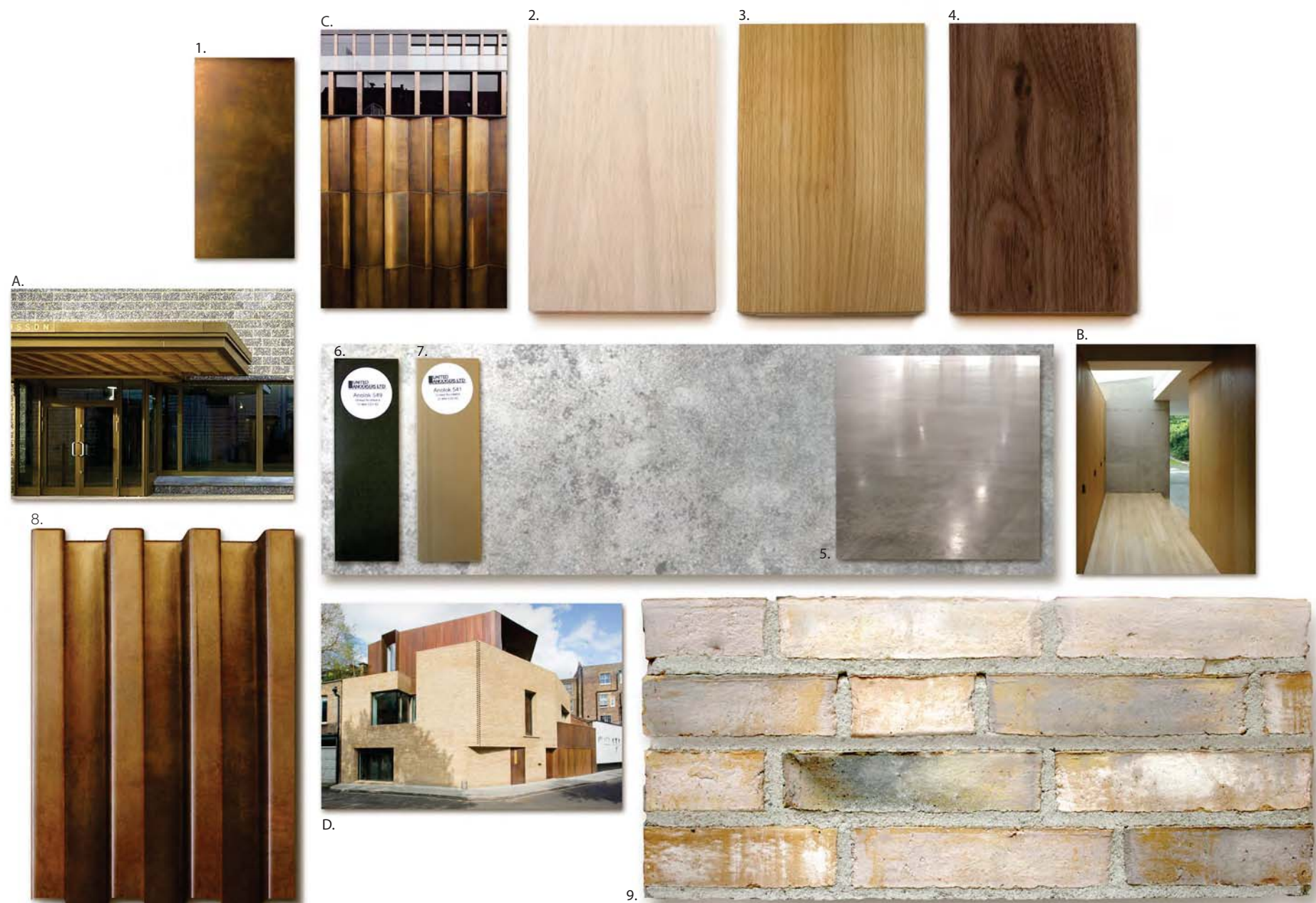
5.7 Material Palette

The proposed scheme seeks to draw on the history of Camden Lock Market and it's surrounding industrial context as inspiration for the material palette used across the site.

The industrial character of the site, the heritage of the Dingwall's Timber Yard together with the additional heritage of hand made craft products leads to a palette based on fine detail and craftsmanship.

The buildings are designed from the inside out as open vessels, expressive of their use. The use of materials that reflect this approach whilst also complimenting the texture and patina of the existing buildings.

A vertical transition is expressed according to use and order. Openings and apertures are formed of punched openings with articulated frames, balconies and external metal work.

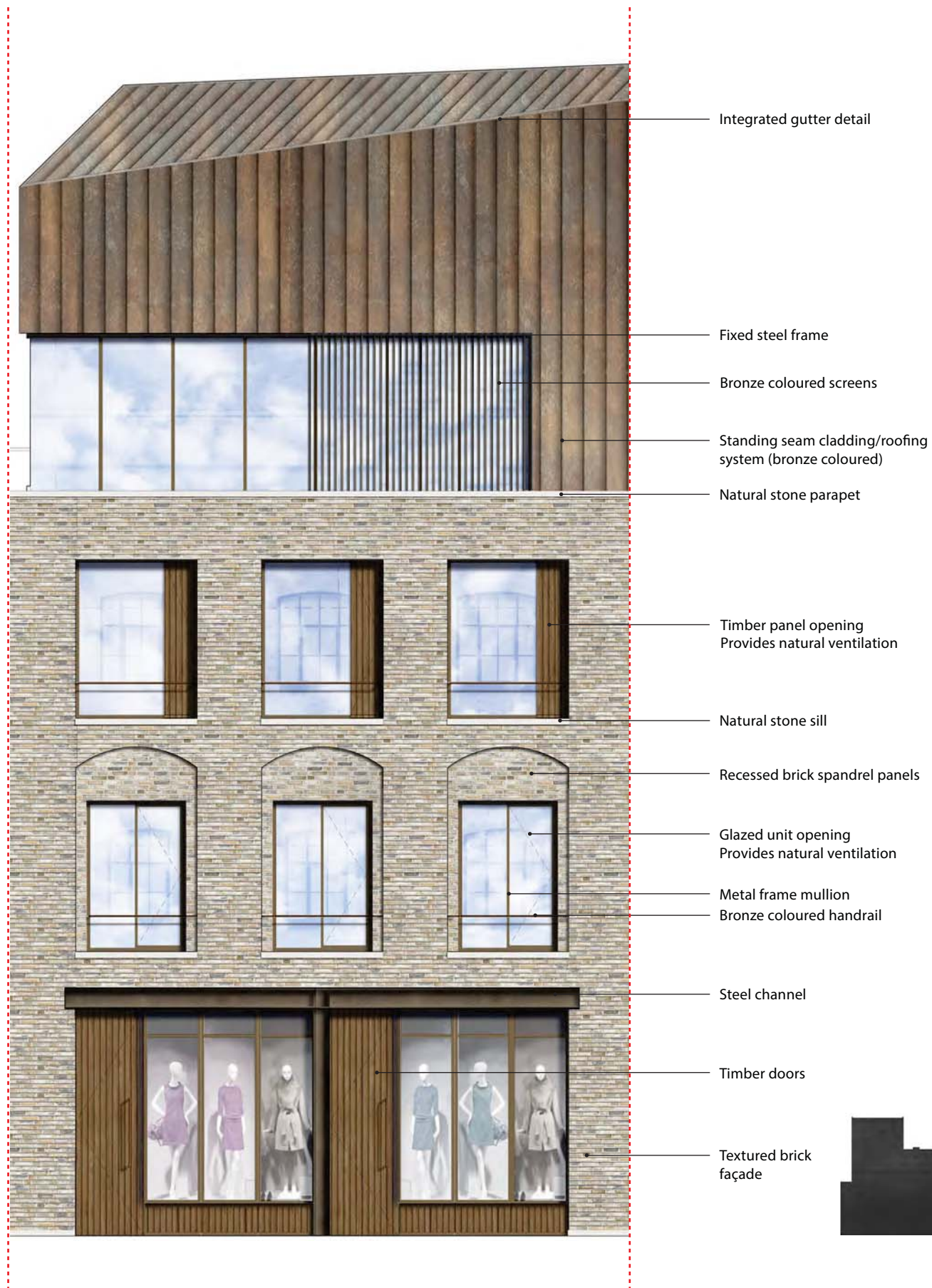


Material Palette Key:

- 1. Bronze Natural Patina
- 2. Oak Light
- 3. Oak Clear Lacquer
- 4. Walnut
- 5. Polished Concrete
- 6. Anodized Metal - Anolok 549
- 7. Anodized Metal - Anolok 541
- 8. Ribbed Bronze Rainscreen Panel
- 9. Petersen D72 Brick

Precedent Images Key:

- A. Colyer Fergusson Hall
- B. Hopefield Avenue
- C. Joseph Pschorr Haus building
- D. Levring House



Metalwork and timber precedent



5.8 Typical Bay Studies



Vertical metal fin precedent

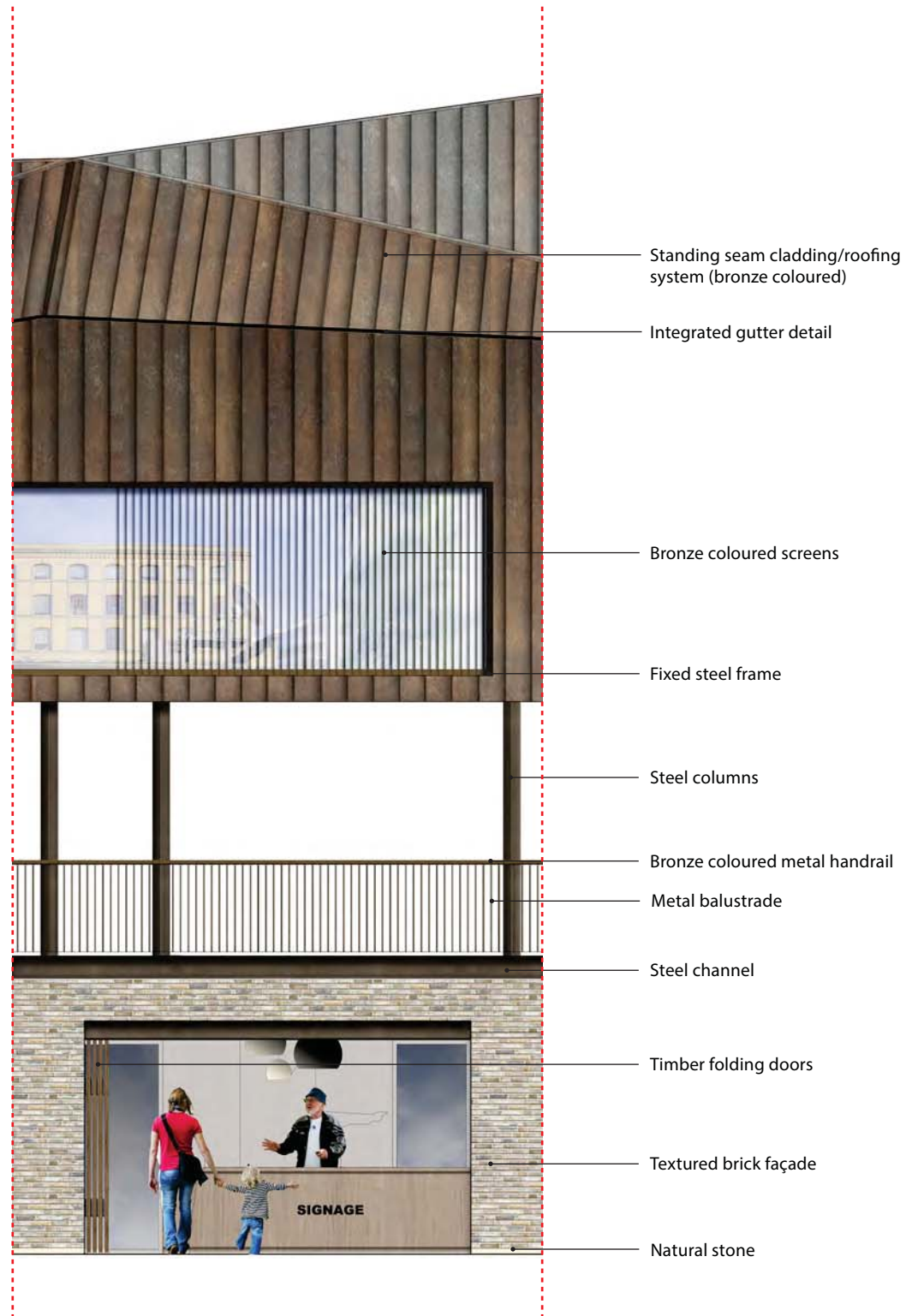
The façade to the Middle Yard Building utilises a palette of high quality materials and precision detailing.

Depth is added to the facade fenestration to improve the articulation and is similar to that of the neighbouring buildings.

The Middle Yard Building façade is composed of a limited palette and includes the following primary elements:

- Bronze sheet metal cladding (Tecu Bronze or similar)
- Hand-made bricks (Petersen D72 or similar)
- Anodized aluminium metalwork
- Timber door panels and glazing



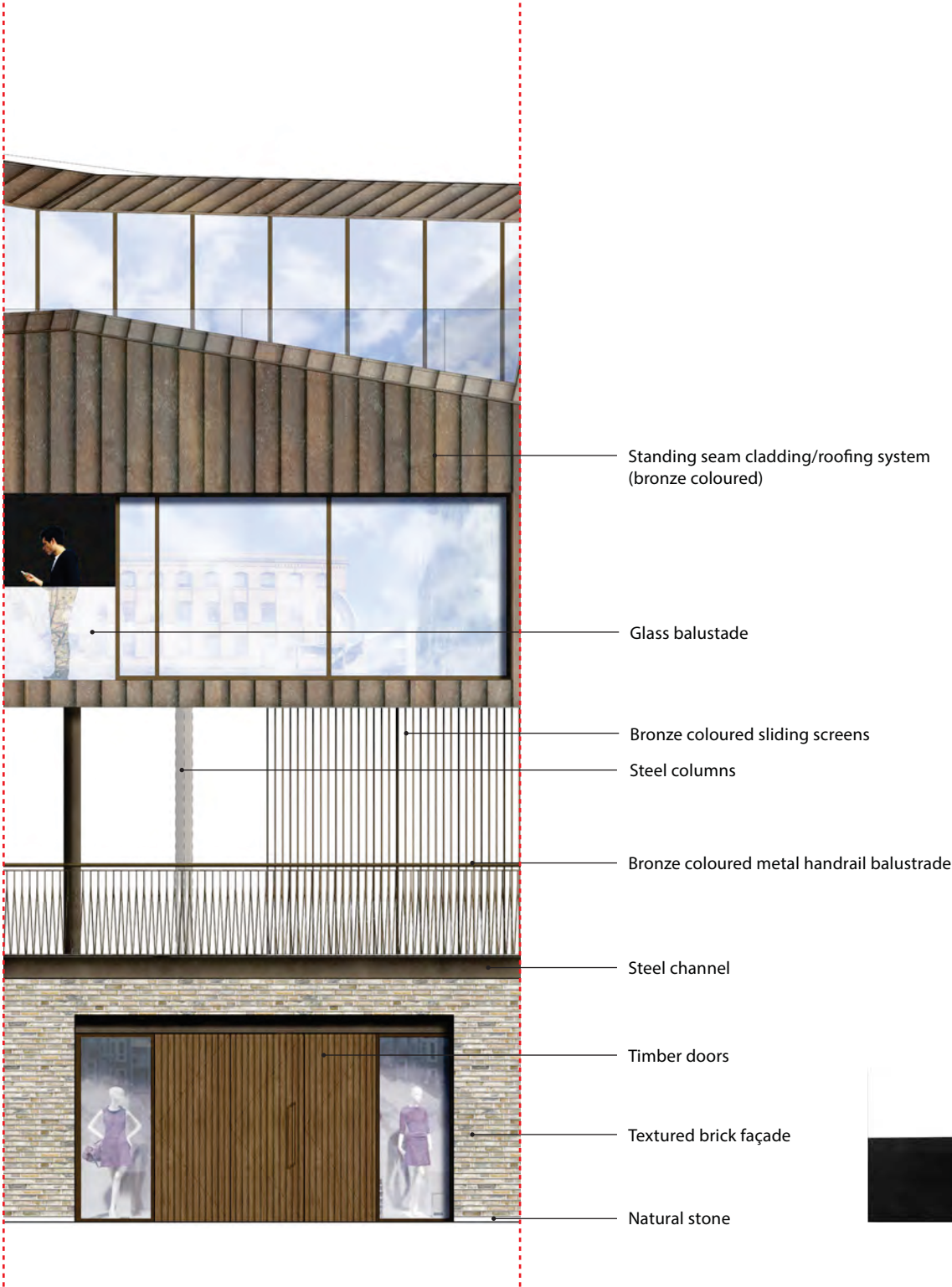


Retail unit precedent



Concrete soffit precedent





Metal cladding precedent





5.9 Walkways & Balustrades

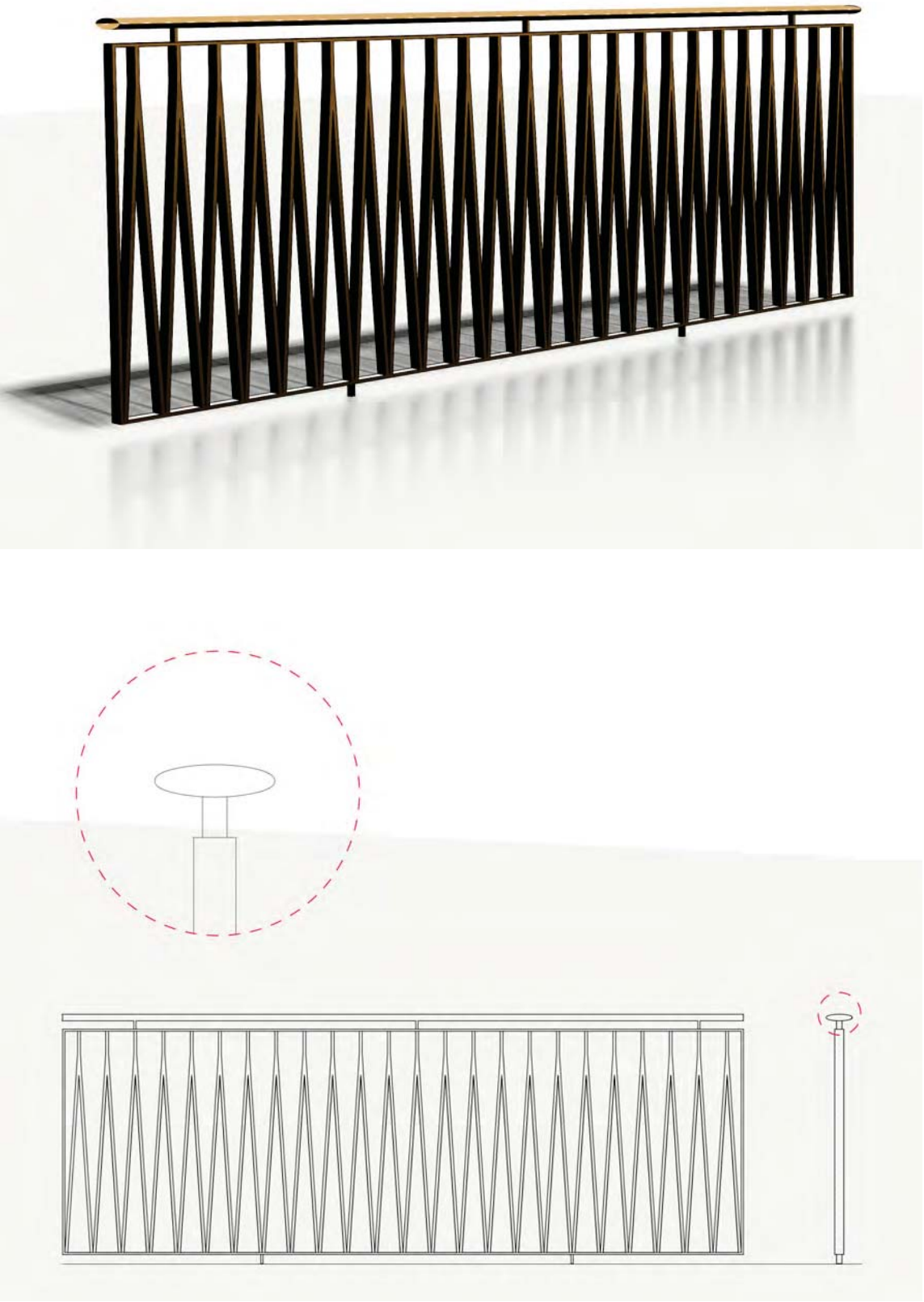
The character of the walkways and their balustrades around the site have been designed in such a way as to be complimentary to the industrial character of the site.

The walkways and balustrades are all expressed in painted metalwork. This is akin to the refined but robust metal work details found in the surrounding heritage buildings.

The top handrail is a natural bronze oval rail that will age and develop a natural patina as people use it.



Proposed view of Middle Yard bridges



Detail studies of balustrade including handrail