
5.0 Middle Yard Building

5.1 Conceptual References

In developing an attitude to the architectural response, the design approach to the Middle Yard Building is founded on two distinct conceptual references - the Timber Yard and the historic Market House typology.

THE TIMBER YARD

Historically used as an operating timber yard, the site has a strong association with shed-like structures where timber was delivered, stored and processed. The site's existing built forms and open spaces reflect this industrial past. These historic structures and their material nature have informed the design process providing a historic precedent for the development of a vessel for the market activities.

THE MARKET HOUSE

The Market House typology is prevalent throughout the historic market towns of England. This typology is usually the most significant built form within the urban fabric of historic market town centres. It therefore seems a suitable reference point for a new market building set within a historic setting.

Traditionally the buildings have an open ground floor perimeter colonnade allowing for the bustling trade activities to operate beneath an enclosed space above. The trading space would often be populated with small shops or stalls and hold weekly livestock or grain markets. The built accommodation on the upper level would typically accommodate different uses, frequently of a civic nature.

There are many examples still in existence today, like the two examples to the left which establish strong precedents for the development of a new building within a constrained and historically sensitive site.



Historic photograph West Yard



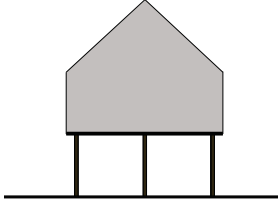
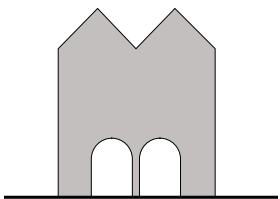
Historic photograph West Yard



Market House, Ross-on-Wye



Market House, Ledbury





5.2 Design Evolution

Drawing from an initial brief to develop a vessel for market activities and to enhance the existing market structures and open spaces, the design evolution has been particularly attentive to the urban quality and historic character of the public realm. It has also taken account of the sensitive location of Middle Yard Building within the existing historical context and its prominent position as part of the regeneration of the Regent’s Canal.

The photographed series on the opposite page shows some of the many roof forms that were explored in settling on a suitable form for the canalside setting. The conceptual diagrams below have supported this process of analysis, composition and form-finding, leading to a systematic production of volumetric studies to the left and rigorous testing of form within the key townscape views from Camden High Street and the Roving Bridge. The final iteration of these studies are presented overleaf.



Option 1 - View from Camden High Street



Option 1 - View from Roving Bridge



Option 2 - View from Camden High Street



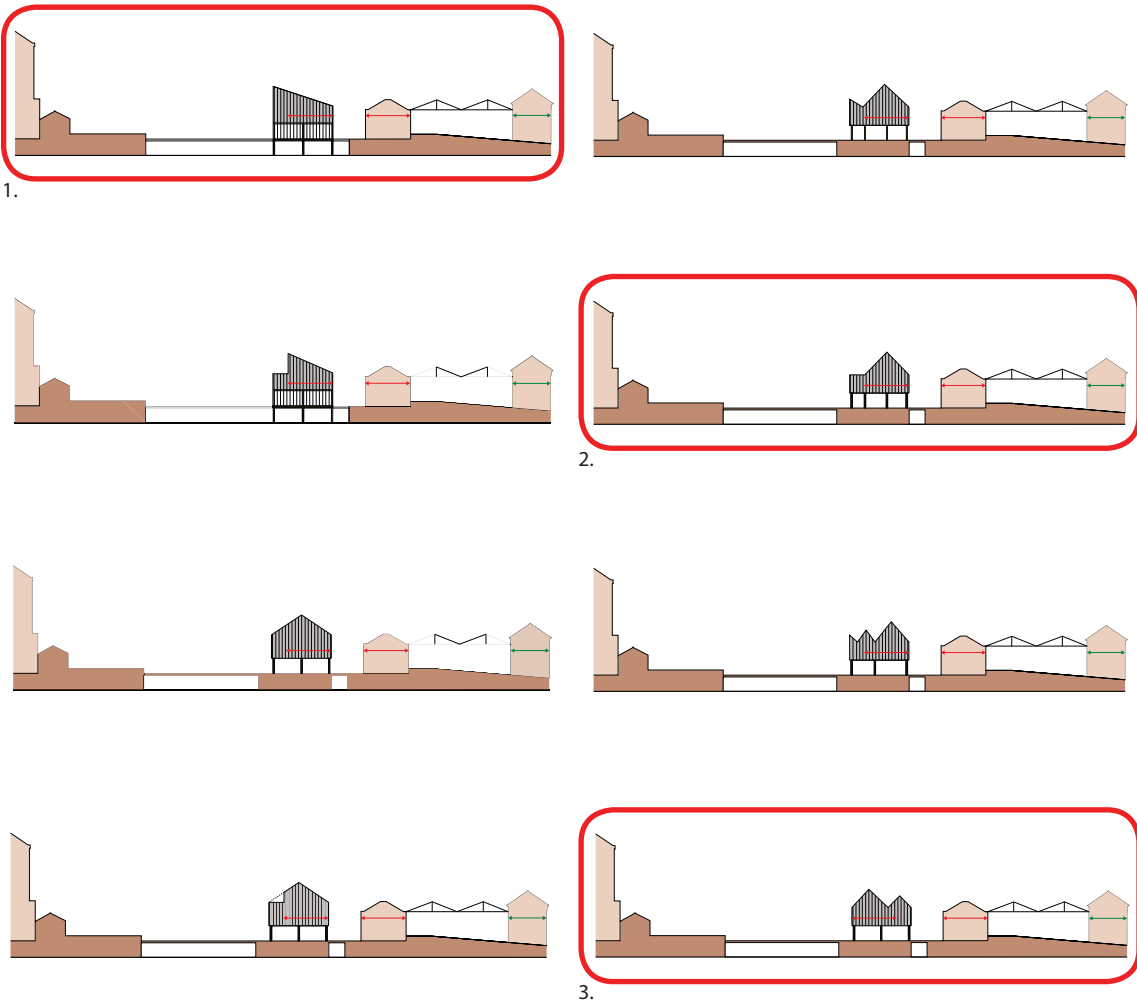
Option 2 - View from Roving Bridge

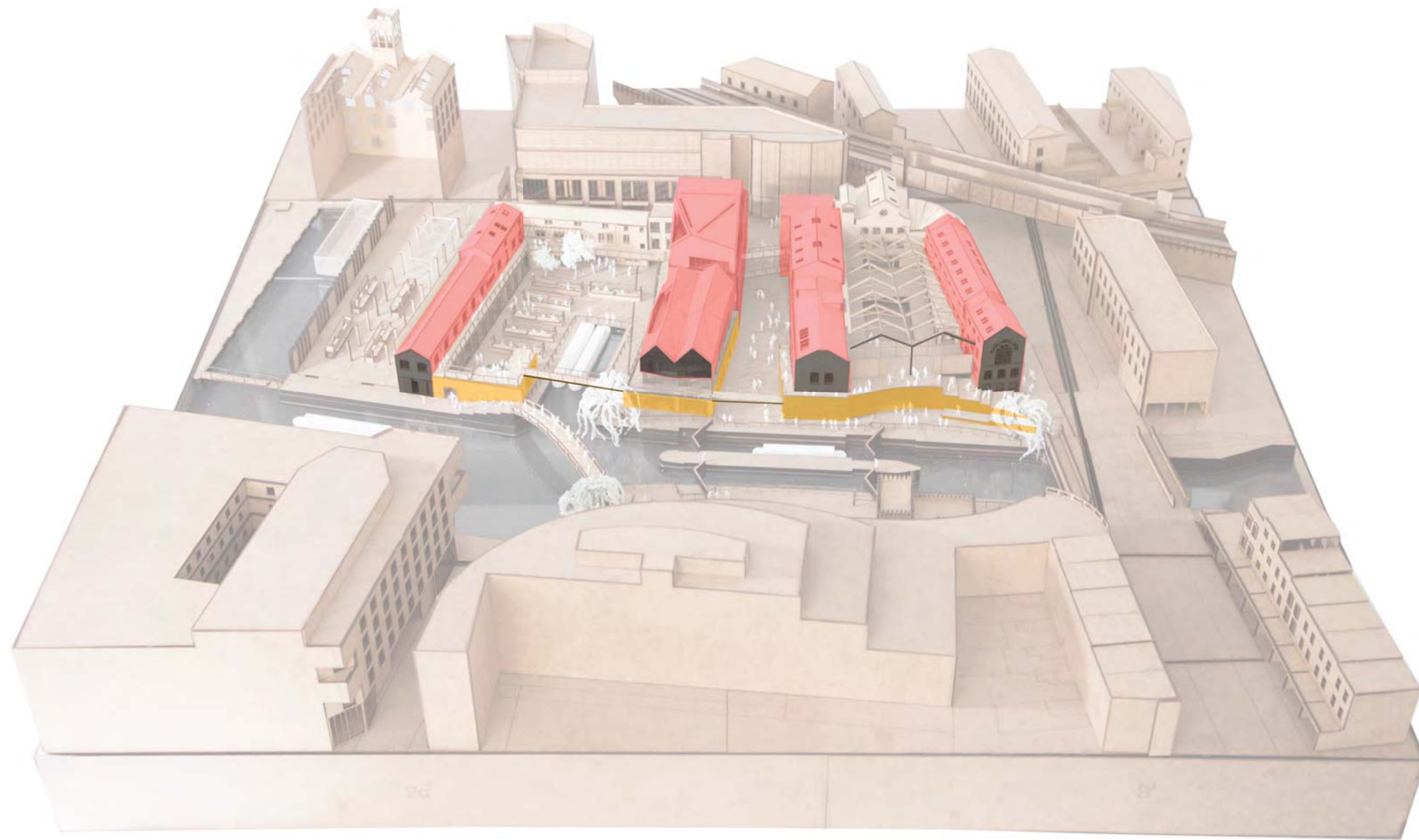


Option 3 - View from Camden High Street

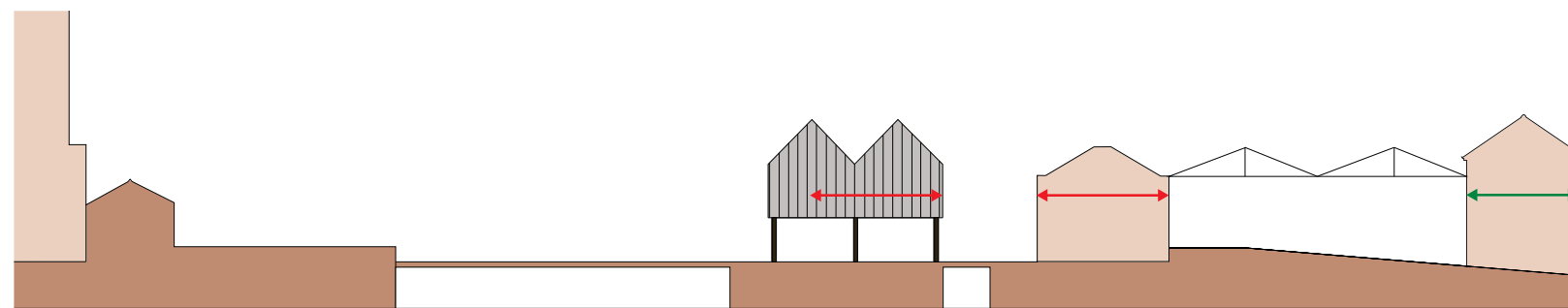


Option 3 - View from Roving Bridge





Conceptual model of the preferred roof profile for the Middle Yard Building in the context of the the site wide proposals



Conceptual diagram of the preferred roof profile for the Middle Yard Building in the context of the the site wide proposals

5.3 Form & Massing Overview



Study of canalside elevation of Middle Yard Building highlighting vertical layering

An analysis of the existing massing and height parameters across the site reveals a pattern of long finger-block building forms with pitched roofs. This typology allows the new Middle Yard Building to reveal the view and physical connection along its length from Camden Lock Place to Regent's Canal. It also improves wayfinding, allowing visitors to orientate themselves by making visual connections by being able to reference known townscape markers.

The diagram on the facing page shows how the double gable of the proposed canal elevation has been designed to respond to the scale of the existing three storey gabled end buildings that define the setting of the frontage facing Regent's Canal. The proposed Middle Yard Building incorporates and replicates these features to propose a contemporary interpretation of the historic building typologies.

The nonlinear extrusion of a double gabled end creates a dynamic folding roof shape which encloses a spectacular internal space accommodating a new restaurant overlooking the canal.

The diagram adjacent highlights the vertical layering of the building. At lower ground floor the base of the building is expressed as a heavy brick plinth that replicates heavyweight brick plinths to buildings elsewhere along the canalside. The lightweight metal clad articulated roof form is erected on columns to create an open market similar to traditional Market House typology and is intended to accommodate a number of food stalls to create a bustling market environment.

The massing of the building gradually rises along its length towards Camden Lock Place, similar to the existing condition but taking advantage of an opportunity to further increase the vertical scale, creating a more balanced relationship with the northern frontage of the Market Hall buildings on Camden Lock Place.

The Middle Yard Building is contemporary yet familiar in its appearance taking precedent from the historic typologies of the timber yard and market houses in addition to responding to the existing heights and form of the buildings located either side.